

MEDITE Devices and
many Consumables are

Made
in
Germany

MEDITE

HURST SCIENTIFIC

PRODUCT CATALOG 2020

Laboratory Equipment and Consumables for
Histology, Cytology and Pathology since 1978



www.medite.de

Your Customer ID: _____

Ordering Contact Information:

Phone: +49 5136 / 88 84-44
Fax: +49 5136 / 88 84-55
Email: sales@medite.de

Monday to Friday 8 a.m. to 1 p.m. CET
Monday to Thursday 1.30 p.m. to 4 p.m. CET

You will receive a written confirmation for every order.

Service Contact Information:

Phone: +49 5136 / 88 84-40
Fax: +49 5136 / 88 84-55
Email: service@medite.de

Our service team is at your disposal for questions and problems regarding your device. For optimal help, please have all information about your device (type, serial number, other important information) ready when calling.

Corporate Headquarter:

MEDITE Medical GmbH

Wollenweberstr. 12
31303 Burgdorf
Germany

In Germany, the Corporate Headquarter of **MEDITE Medical** are based in Burgdorf, near Hanover, with an additional production plant in Nussloch, close to Frankfurt a. M. Additional Sales Offices are based in Hong Kong. Our Worldwide Distributor Network helps supporting Pathologists, Cytologists and Scientists globally.



All **MEDITE** devices manufactured in Germany at our two production sites in Burgdorf (near Hanover) and Nussloch (near Frankfurt a. M.). The high-quality devices are in most parts handmade by well-trained staff with many years of experience. Additionally, at **MEDITE** we are focussed on doing our own extensive, ongoing research for the development of new features and devices. Consumables sold by **MEDITE** are made in Germany or E. U.

Page

Page

Embedding

6	Embedding Cassettes	7	Tissue Tamper
6	Biopsy Cassettes	7	Filter Paper
6	Stainless Steel Lid	7	Filter Pads
6	Mega and Super Mega Cassettes	8	Embedding Molds
7	Paraffin	8	Cryo-Spray
7	Paraffin Remover	8	Cryo Embedding Medium

Sectioning

9	Microtome Blades TissueCut® and TissueCut® Plasma
---	---

Staining

10	Staining Solutions Histology Premium and Standard	11	Tissue Marking Dye
10	Staining Solutions Cytology Premium and Standard	11	Marker
11	Slide Staining Sets and Accessories		

Coverslipping

12	CytoTape Coverslipping Film	12	Mounting Media
12	Coverglass	13	Sprayfix Fixative Spray

Solvents

13	Decalcifying Solutions USERAPID , USEDECALC	14	Xylene
13	new decalc	14	X-TRA-Solv Xylene Substitute
13	Formalin	14	Isopropanol
14	Formalin Neutralizer		

Filing

15	Cardboard Filing Boxes for Slides and Paraffin Blocks	15	Wooden Slide Filing Box
15	SAT 04 Slide Filing Map	16	Slide Filing Cabinet System MICROGLASS/MICROBLOCK

Cytology

17	SureThin® Processor	19	SAFEPREP® Gyn-Kits
17	SureThin® Gyn-Kits	19	SAFEPREP® Consumables
18	SureThin® Consumables	20	PAP Test Brushes and Spatulas

Staining, Coverslipping and Processing

22	COT 20 Continuous Slide Stainer	27	Twister Film Coverslipper
24	TST 44 Automatic Stainer	28	RCM 9000 Glass Coverslipper
26	TCA 44-720 Stainer-Glass-Coverslipper Combination	30	TPC 15 Duo/Trio Rapid Tissue Processor

Embedding

32	TES Valida Modular Tissue Embedding System
34	TES 99 Modular Tissue Embedding System

Microtomy

36	Cryostat M630 Semi-Automatic Floor Standing Cryostat	38	Rotary Microtome A550 Automatic
37	Rotary Microtome M530 Semi-Automatic	39	Rotary Microtome M380 Manual

Cooling

40	COP 30 Cooling Plate	41	MKF 20 Cooling Unit for Table Built In
40	TKF 22 Quick Cooling Unit		

Decalcifying and Drying

42	USE 33 Ultrasonic Decalcifier	44	TAZ 19 Bench-Type Fume Absorber
43	TDO Sahara Tissue Drying Oven		

Stretching

45	TFB 45 Tissue Floatation Bath	46	TFB 35 Tissue Floatation Bath
45	TFB 55 Tissue Floatation Bath	47	OTS 40 Slide Stretching Table

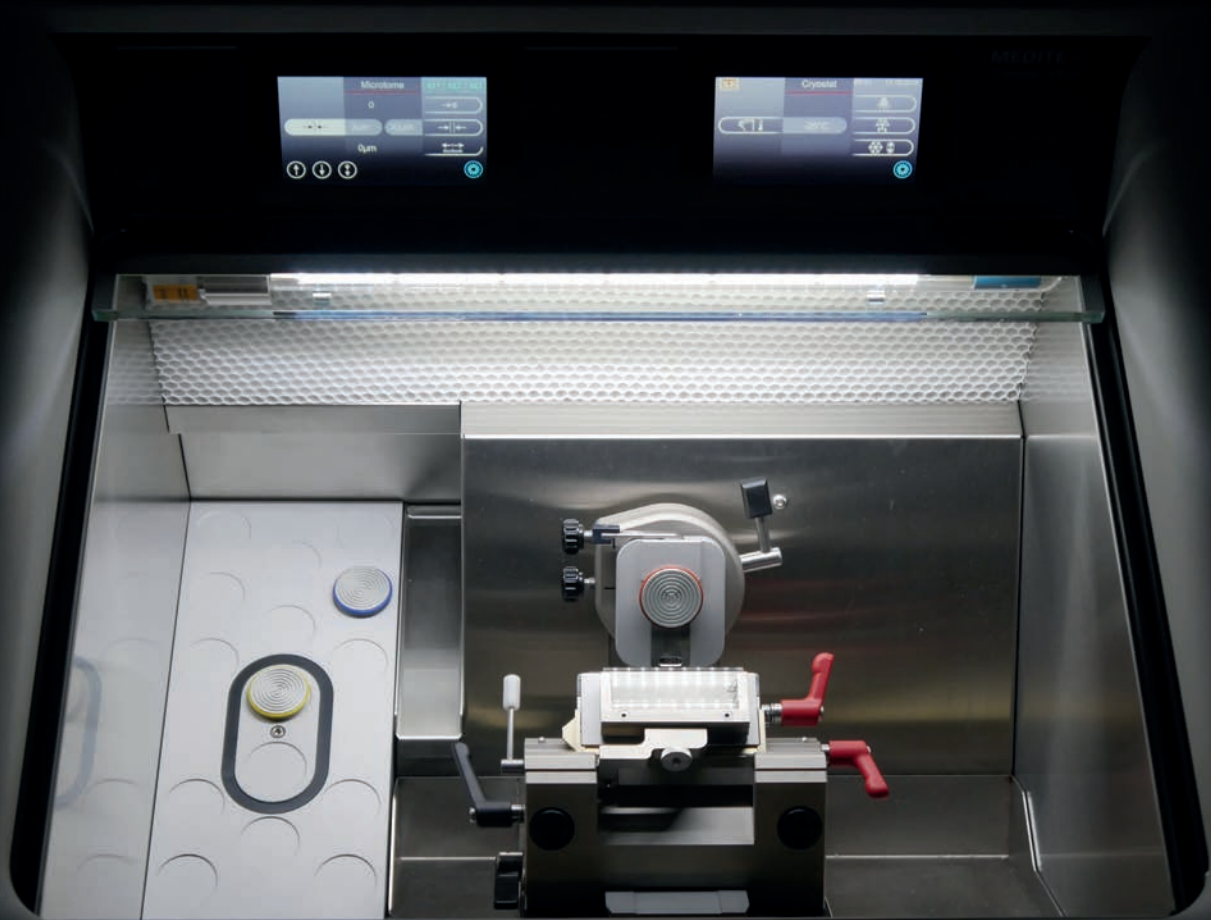
Pre- and Post-Processing

48	eCep Heated Forceps	49	L 15 Automated Paraffin Dispenser
49	EDS 20 Electronic Engraving Pen		

General Information

2	Customer Service and Order Options	51	Terms and Conditions of Sale
50	Notes		

ICE-COLD PRECISION

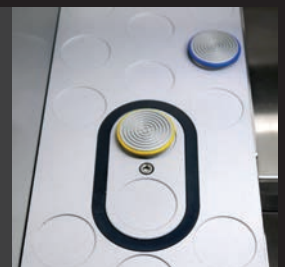


PERFECT TUNING

The built-in fine adjustment ensures optimal alignment of the sample.

COOLING IN REAL TIME

Thanks to two quick freeze spots, the samples can be cooled down in a matter of seconds.



EXTENSIVE PROTECTION

The integrated UVC disinfection protects the sample from contact with infectious material.

CRYOSTAT M630

ARM REST AREA

ergonomic shape

TOUCH DISPLAY

intuitive operation
hygienic
user-friendly

HAND WHEEL

easy-going
ergonomic

OPERATION

quiet-running
energy-saving



The **Cryostat M630** features a high-precision semi-automatic rotary microtome and a powerful cooling chamber with quick freeze spots. It is particularly suitable for use for routine applications.

The high-quality blade holder and the built-in fine adjustment ensure primary cutting quality. Two touch screens and a sophisticated user interface enable simple and intuitive operation.

Further information on the Cryostat M630 can be found on page 36 of this catalog, or by scanning the QR code below!



Embedding Cassettes with tearable lid



- Pattern: slotted holes
- With tearable lid
- Easy to open
- Front side bevelled 45°, inscribable
- Made of plastic for laboratory use

Type	Purchasing Unit	Category No.
White	Box of 1,000 pcs.	46-1100-00
Blue	Box of 1,000 pcs.	46-1101-00
Yellow	Box of 1,000 pcs.	46-1102-00
Green	Box of 1,000 pcs.	46-1103-00
Pink	Box of 1,000 pcs.	46-1106-00

Embedding Cassettes without lid



- Pattern: round holes
- Front side bevelled 45°, inscribable
- Made of plastic for laboratory use
- Matching stainless steel lid separately available

Type	Purchasing Unit	Category No.
White	Box of 1,000 pcs.	47-1300-00
Blue	Box of 1,000 pcs.	47-1301-00
Yellow	Box of 1,000 pcs.	47-1302-00
Green	Box of 1,000 pcs.	47-1303-00
Pink	Box of 1,000 pcs.	47-1306-00

Stainless Steel Lid for cassettes without lid



- Pattern: round holes
- Made of stainless steel
- Reusable after thorough cleaning
- For use with embedding cassettes without lid, Cat. No. 47-1300-00 ff.

Type	Purchasing Unit	Category No.
Stainless Steel Lid	Bag of 25 pcs.	47-1050-01

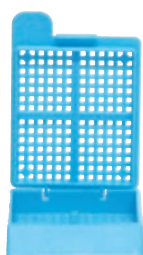
Biopsy Cassettes with tearable lid



- Pattern: square holes
- With tearable lid
- Easy to open
- Front side bevelled 45°, inscribable
- Made of plastic for laboratory use

Type	Purchasing Unit	Category No.
White	Box of 1,000 pcs.	46-1700-00
Blue	Box of 1,000 pcs.	46-1701-00
Yellow	Box of 1,000 pcs.	46-1702-00
Green	Box of 1,000 pcs.	46-1703-00
Pink	Box of 1,000 pcs.	46-1706-00

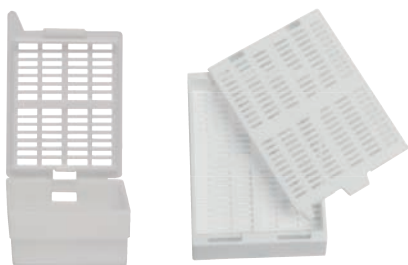
Biopsy Cassettes with hinged lid



- Pattern: square holes
- With hinged lid
- Easy to open
- Front side bevelled 45°, inscribable
- Made of plastic for laboratory use

Type	Purchasing Unit	Category No.
White	Bag of 500 pcs.	47-1250-00
Blue	Bag of 500 pcs.	47-1255-00
Yellow	Bag of 500 pcs.	47-1252-00
Green	Bag of 500 pcs.	47-1253-00
Pink	Bag of 500 pcs.	47-1254-00

Mega and SuperCassettes with lid



- With affixed lid
- Color: white
- Made of plastic for laboratory use
- Dimensions Mega Cassette:
 - Inner dimensions: 30 x 25 x 10 mm
 - Outer dimension: 40 x 28 x 12 mm
- Dimensions Super Mega Cassette:
 - Inner dimensions: 62 x 48 x 14 mm
 - Outer dimensions: 73 x 53 x 16 mm

Type	Purchasing Unit	Category No.
Mega	Bag of 750 pcs.	47-1150-00
Super Mega	Bag of 200 pcs.	47-1155-00

MEDITE PURE Paraffin



- Innovative paraffin formulation with multi-purified paraffin, without polymers or other toxic substances
- Results in a high-gloss, transparent surface for the detection of tiny biopsies
- Suitable for use with all intermediates
- Excellent properties in processing, embedding and cutting
- Good firmness after cooling without wrinkling
- Melting point: 56 – 58 ° C
- Quickly soluble when dewaxing

Type	Purchasing Unit	Category No.
25 kg	Bag of 25 kg	40-0022-00
12.5 kg	Box of 12.5 kg	40-0021-00
10 kg	Box of 5 bags of 2 kg	40-0020-00

Paraffin Remover



- Including spray pump for convenient proportioning
- Perfect alternative to xylene or toluene for removal of paraffin residues
- Consists of a mixture of oils that is applied in laboratories as reliable detergent with lowest pollutant emission

Type	Purchasing Unit	Category No.
Bottle of 250 ml	Box of 5 bottles and 2 pumps	41-5600-00

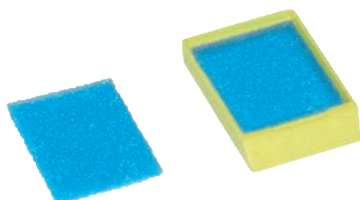
Filter Paper



- For processing of biopsy compounds
- Fits a standard processing cassette
- Prevents loss of small specimen
- Dimensions: 26 x 66 mm
- Ready to use, easy to tear off
- Pad of 100 sheets

Type	Purchasing Unit	Category No.
White Filter Paper	Box of 10 pads	46-6200-00

Filter Pads



- Filter Pads made of foam
- For processing of biopsy compounds
- Fits a standard processing cassette
- Ready to use
- Prevents loss of small specimen
- Dimensions: 26 x 32 x 2 mm

Type	Purchasing Unit	Category No.
Blue Filter Pads	Bag of 500 pcs.	47-1060-00

Embedding Molds Premium Reusable



- Compatible with standard embedding cassettes
- Reusable after thorough cleaning
- Finely processed

Type	Purchasing Unit	Category No.
7 x 7 x 5 mm	Bag of 12 pcs.	47-2001-00
15 x 15 x 5 mm	Bag of 12 pcs.	47-2002-00
24 x 24 x 5 mm	Bag of 12 pcs.	47-2003-00
30 x 24 x 5 mm	Bag of 12 pcs.	47-2004-00
37 x 24 x 5 mm	Bag of 12 pcs.	47-2005-00

Embedding Molds for Mega and Super-Mega Cassettes Reusable



- Reusable after thorough cleaning
- For Mega Cassettes: 33 x 24 x 12 mm
- For Super Mega Cassettes: 65 x 45 x 15 mm

Type	Purchasing Unit	Category No.
For Mega Cassettes	Bag of 6 pcs.	47-2010-00
For Super Mega Cassettes	Bag of 10 pcs.	47-2015-00

Tissue Tamper



- Helpful tool with heat-resistant handle
- For safe positioning of tissue specimen in tissue embedding
- Sizes:
 - Large: 19 x 19 mm
 - Medium: 13 x 13 mm
 - Small: 7 x 7 mm

Type	Purchasing Unit	Category No.
Large	1 pc.	46-0910-01
Medium	1 pc.	46-0911-01
Small	1 pc.	46-0912-01

Cryo-Spray Quick Freeze Spray



- Spray for histology without fluorochlorocarbons
- For freezing of fresh tissue for cryostat sectioning, and for cooling of wax embedded tissue for paraffin sectioning
- Optimal freeze control by special spray nozzle (included)

Type	Purchasing Unit	Category No.
Can of 200 ml	Box of 12 cans	40-0110-00
Can of 400 ml	Box of 12 cans	40-0111-00

Cryo Embedding Medium Embedding Fluid



- Embedding fluid for Cryo sections
- Convenient dropping bottle

Type	Purchasing Unit	Category No.
Bottle of 125 ml	Box of 6 bottles	41-3011-00

Image can vary.

Microtome Blades TissueCut® PLASMA

Disposable Blades, High and Low Profile



HS35



LS35



LH35

Typ HS35 – High Profile Plasma

- Dispenser of 50 high profile blades made of stainless steel with **plasma coating**
- Perfect for **cryo sections** and **sectioning ribbons**
- Special blade hardening
- Short trimming time and excellent durability

Typ LS35 – Low Profile Plasma

- Dispenser of 50 low profile blades made of stainless steel with hardened cutting edge and **plasma coating**
- For **very hard tissue** on sliding and rotary microtomes
- Excellent sectioning results and standing times after longer trimming
- Long blade durability

Typ LH35 – Low Profile Plasma

- Dispenser of 50 low profile blades made of stainless steel with **plasma coating**
- For **thin paraffin sections**, also approved in routine
- High sectioning speed and edge sharpness durability

Type	Purchasing Unit	Category No.
HS35 High Profile Plasma	Box of 10 Dispenser	48-1670-00
LS35 Low Profile Plasma	Box of 10 Dispenser	48-1680-00
LH35 Low Profile Plasma	Box of 10 Dispenser	48-1690-00

Microtome Blades TissueCut®

Disposable Blades, High and Low Profile



R 70



R 52



N 42

Typ R 70 – High Profile

- Dispenser of 50 high profile blades made of stainless steel
- For **routine sections with harder material**
- Excellent sectioning quality, even directly after trimming at same blade position
- Great standing times, edge durability and hardness

Typ R 52 – Low Profile

- Dispenser of 50 low profile blades made of stainless steel
- For **routine sections with harder material**
- Excellent sectioning quality, even directly after trimming at same blade position
- Great standing times, edge durability and hardness

Typ N 42 – Low Profile

- Dispenser of 50 low profile blades made of stainless steel with extra hardened cutting edge
- For **very hard tissue** on sliding and rotary microtomes
- Excellent sectioning results and standing times after longer trimming
- Long blade durability



S 67



A 26



S 80

Typ S 67 – Low Profile

- Dispenser of 50 low profile blades made of stainless steel
- For **thin paraffin sections**, also approved in routine
- High sectioning speed and edge sharpness durability

Typ A 26 – Low Profile

- Dispenser of 50 low profile blades made of stainless steel
- For **soft and hard tissue as well as extra thin sections**
- Great durability, short sectioning time with respective clearance angle

Typ S 80 – Low Profile

- Dispenser of 50 low profile blades made of stainless steel
- For **extra thin paraffin sections**
- High sectioning speed
- Great durability

Type	Purchasing Unit	Category No.
R70 High Profile	Box of 10 Dispenser	48-1601-00
R 52 Low Profile	Box of 10 Dispenser	48-1600-00
N 42 Low Profile	Box of 10 Dispenser	48-1610-00
S 67 Low Profile	Box of 10 Dispenser	48-1620-00
A 26 Low Profile	Box of 10 Dispenser	48-1630-00
S 80 Low Profile	Box of 10 Dispenser	48-1640-00

Staining Solutions Histology Premium



- Premium staining solutions of the highest purity and quality
- For the production of high quality histological tissue stains

Type	Packing Unit	Purchasing Unit	Category No.
Hematoxyline Mayer	Bottle of 2.5 liters	Box of 6 bottles	41-5131-00
Hematoxyline Harris	Bottle of 2.5 liters	Box of 6 bottles	41-5136-01
Eosin 0,2%, alcohol.	Bottle of 2.5 liters	Box of 6 bottles	41-5141-00
Giemsa	Bottle of 1 liter	Box of 6 bottles	41-5120-00

Staining Solutions Histology Standard



- Staining solutions for the cost-aware laboratory
- For the preparation of histological tissue stains

Type	Packing Unit	Purchasing Unit	Category No.
Hematoxyline Mayer	Bottle of 2.5 liters	Box of 6 bottles	41-6860-00
Hematoxyline Harris	Bottle of 2.5 liters	Box of 6 bottles	41-6850-00
Eosin 0.2%, alcohol.	Bottle of 2.5 liters	Box of 6 bottles	41-6650-00
Eosin 0.2%, acq.	Bottle of 2.5 liters	Box of 6 bottles	41-6670-00
Eosin 0.5%, acq.	Bottle of 2.5 liters	Box of 6 bottles	41-6671-00

Staining Solutions Cytology Premium



- Premium staining solutions of the highest purity and quality
- For the production of high quality cytological tissue stains

Type	Packing Unit	Purchasing Unit	Category No.
Hematoxyline Harris 1A (PAP)	Bottle of 2.5 liters	Box of 6 bottles	41-5136-01
Papanicolaou 2A OG6	Bottle of 2.5 liters	Box of 6 bottles	41-5151-01
Papanicolaou 3B EA50	Bottle of 2.5 liters	Box of 6 bottles	41-5171-01

Staining Solutions Cytology Standard



- Staining solutions for the cost-aware laboratory
- For the preparation of cytological tissue stains

Type	Packing Unit	Purchasing Unit	Category No.
Hematoxyline Harris 1A (PAP)	Bottle of 2.5 liters	Box of 6 bottles	41-6850-00
Papanicolaou 2B Orange II	Bottle of 2.5 liters	Box of 6 bottles	41-6720-00
Papanicolaou 2A OG6	Bottle of 2.5 liters	Box of 6 bottles	41-6750-00
Papanicolaou 3B EA50	Bottle of 2.5 liters	Box of 6 bottles	41-6770-00

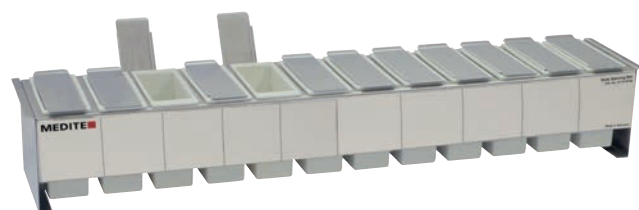
Tissue Marking Dye for easy orientation



- Excellent for marking margins of excised tissue
- Does not affect the diagnostic process
- Non-toxic
- Great visibility under the microscope

Type	Purchasing Unit	Category No.
Black	Bottle of 100 ml	41-7001-01
Blue	Bottle of 100 ml	41-7002-01
Green	Bottle of 100 ml	41-7003-01
Orange	Bottle of 100 ml	41-7004-01
Red	Bottle of 100 ml	41-7005-01
Yellow	Bottle of 100 ml	41-7007-01

Slide Staining Sets



- Acid-proof rack made of stainless steel
- Front rewritable with wipeable pen
- Plastic troughs with stainless steel lid
- Resistant to alcohol, xylene, toluene and staining solutions
- Nylon slide basket for 25 microscope slide, with microwaveable handle
- Complete set consisting of:
 - rack made of stainless steel
 - troughs with lid
 - 1 slide basket with plastic handle
- Dimensions (W/D/H):
 - Large: 710 x 140 x 130 mm
 - Medium: 370 x 140 x 130 mm
 - Small: 200 x 140 x 130 mm

Type	Purchasing Unit	Category No.
Large	1 Set with 12 troughs	47-3112-00
Medium	1 Set with 6 troughs	47-3116-00
Small	1 Set with 3 troughs	47-3121-00

Slide Staining Accessories



- Staining trough made of thermoplast for Slide Staining Sets
 - Inner dimensions (W/D/H): 96 x 45 x 100 mm
 - Outer dimensions (W/D/H): 117 x 50 x 100 mm
 - Volume: 360 ml
- Lid made of stainless steel for staining trough

Type	Purchasing Unit	Category No.
Staining Trough	1 pc.	35-2002-50
Lid for staining trough	Bag of 6 pcs.	43-5070-00

Microscope Slide Holder for Slide Staining Sets



- For 25 microscope slides
- Microwaveable
- For Slide Staining Sets Cat. No.: 47-3112-00
47-3116-00
47-3121-00

Type	Purchasing Unit	Category No.
Blue	Box of 6 pcs.	47-3142-00

Marker for cassettes and microscope slides



- Fibre pencil with solvent-resistant ink
- For labelling of tissue embedding cassettes and microscope slides
- Writing color: black
- Solvent-free, odorless and waterbased

Type	Purchasing Unit	Category No.
Black	Box of 12 pens	47-1070-00

CytoTape

Coverslipping Film



Not available for E. U.

- Highly transparent coverslipping film made in Germany
- Protecting compounds against environmental influences
- For use in film coverslipping machines
- Dimensions (W/D): 70 m / 24 mm
- One reel sufficient for up to 1,200 coverslips of 50 mm
- Long-term consistent
- Quick adhesion and easy to remove

Type	Packing Unit	Purchasing Unit	Category No.
CytoTape		Box of 5 rolls	40-4300-00

Coverglass for Coverslipping Machines

Made in Germany



- For use in coverslipping machines
- Made of pure white, borosilicate glass
- Complying with norm ISO 8255/1
- Thickness: 0.95 - 1.05 mm
- Made in Germany
- Packed in handy boxes of 100 pcs.

Type	Purchasing Unit	Category No.
24 x 50 mm	Box of 1,000 pcs.	46-9452-01
24 x 55 mm	Box of 1,000 pcs.	46-9455-01
24 x 60 mm	Box of 1,000 pcs.	46-9451-01

Mountex

Mounting medium



- Contains xylene, which makes it unnecessary to use more xylene throughout the coverslipping process
- Synthetic mounting medium for coverslipping directly out of alcohol
- Soluble with isopropyl and alcohol
- Bubble-free coverslipping without changing form, structure or color of the compound
- Quick-drying
- Good flowing characteristics

Type	Packing Unit	Purchasing Unit	Category No.
Mountex	Bottle of 500 ml	Box of 6 bottles	41-4021-00
Mountex	Bottle of 1,000 ml	Box of 6 bottles	41-4022-00

pertex®

Mounting Medium



- Synthetic mounting medium
- Soluble with xylene
- Rapid-drying

Type	Packing Unit	Purchasing Unit	Category No.
pertex	Bottle of 200 ml	Box of 6 bottles	41-4010-00
pertex	Bottle of 500 ml	Box of 6 bottles	41-4011-00
pertex	Bottle of 1,000 ml	Box of 6 bottles	41-4012-00

X-TRA-Kitt

Mounting Medium



- Synthetic mounting medium
- Xylene-free
- Microscope slides can be mounted directly from X-TRA-Solv

Type	Packing Unit	Purchasing Unit	Category No.
X-TRA-Kitt	Bottle of 500 ml	Box of 5 bottles	41-5219-00

Mount quick

Mounting Medium aqueous



- Medium for mounting of stained sections for lipid and immunostaining in histology and immunohistology
- Use in histology: During usage of lipid staining or if dehydrating the samples means losing the staining characteristics
- Use in immunohistology: During usage of soluble chromogenic solutions like AEC with an organic solvent

Type	Packing Unit	Purchasing Unit	Category No.
Mount quick	Bottle of 30 ml	1 bottle	41-5234-00

Sprayfix

Fixative



- Fixation medium for cytological smear
- Soluble in alcohol and water
- Content of one bottle is sufficient for approx. 1,000 to 1,500 smears

Type	Packing Unit	Purchasing Unit	Category No.
Sprayfix	Bottle of 200 ml	1 bottle	41-2010-00

USERAPID

Decalcifying Solution



- Special acid decalcifying reagent
- Perfect for use in combination with USEDECALC for significant reduction of decalcifying time
- Developed for decalcifying with the USE 33 (see p. 42)
- Decalcification time, depending on the size of specimen: 1 - 3 hrs.
- Maximum conservation of morphologic structures and immunohistochemical information
- Shelf life: up to 2 years
- Store dark at 4 °C to 25 °C

Type	Packing Unit	Purchasing Unit	Category No.
USERAPID	Can of 5 liters	1 can	40-3300-00

USEDECALC®

Decalcifying Solution



- pH-neutral, buffered customized solution for rapid decalcification of histologic material
- Up to 40 - 75 % reduction of decalcification time in comparison to conventional EDTA techniques by using MEDITE's USE 33 Decalcifier and USERAPID
- Maximum conservation of morphologic structures, especially developed for immunohistochemical procedures
- Shelf life: up to 2 years
- Store dark at 4 °C to 25 °C

Type	Packing Unit	Purchasing Unit	Category No.
USEDECALC	Can of 5 liters	1 can	40-3310-00

new decalc

Rapid Decalcifying Solution



- Effective, rapid bone decalcifier for preparation of histological materials with improved morphological tissue preservation
- The stained samples show an excellent presentation of histological details
- For all common fixing methods

Type	Packing Unit	Purchasing Unit	Category No.
new decalc	Bottle of 1 liter	1 bottle	41-5710-00

Formalin



- Formalin solution, 4 Vol. % w/v, phosphate buffered, pH 6.8 - 7.2
- Formalin fixation ensures great penetration and preservation of tissue
- Interlacing proteins with each other and in part immobilization of soluble antigens by using formalin, also masking or destruction of antigenetic structures

Type	Packing Unit	Purchasing Unit	Category No.
Formalin	Can of 10 liters	1 can	41-5313-00

Formalin Neutralizer



- 40 litres (e.g. 4% or 10%) formalin solution can safely and simply be neutralized by 5 kg neutralizer within 24 hrs.
- The neutralizer converts formalin by a simple non-hazardous reaction to harmless esters and acids
- The final products of the neutralization of a 4% formalin solution only contain lowest concentration of methanol and usually can be disposed with waste water according to the local disposal regulations

Type	Packing Unit	Purchasing Unit	Category No.
Formalin Neutralizer	Bucket of 5 kg	1 bucket	41-5302-00

Xylene



- Mixture of isomeres for deparaffination of histological section
- Colorless fluid with aromatic odor
- Not soluble in water
- Pure, filled in plastic cans

Type	Packing Unit	Purchasing Unit	Category No.
Xylene	Can of 5 liters	1 can	41-5412-00
Xylene	Can of 10 liters	1 can	41-5413-00
Xylene	Can of 30 liters	1 can	41-5416-00

X-TRA-Solv

Xylene Substitute



- Clearing reagent based on isoparaffins for embedding and deparaffination
- Great alternative to aromatic clearing agents for histopathological and cytological applications

Type	Packing Unit	Purchasing Unit	Category No.
X-TRA-Solv	Can of 2.5 liters	1 can	41-5211-00
X-TRA-Solv	Can of 5 liters	1 can	41-5212-00
X-TRA-Solv	Can of 10 liters	1 can	41-5213-00

Isopropanol

Secondary Alcohol



- Highly concentrated Isopropanol (min. 99.5 %) for cleaning and disinfection
- Can be mixed and reduced with water
- Versatile, e. g. as substitute for Ethanol

Type	Packing Unit	Purchasing Unit	Category No.
Isopropyl	Can of 5 liters	1 can	41-5522-00
Isopropyl	Can of 25 liters	1 can	41-5525-00

Microscope Slide Filing Box for up to 1,200 Microscope Slides



- Extremely stable cardboard box for storage of approx. 1,200 slides 76 x 26 mm in 5 rows
- Stopper to avoid tumbling and slipping
- Box and lid with printed label
- Material: cardboard, white
- Dimensions (W/D/H): 295 x 165 x 85 mm

Type	Purchasing Unit	Category No.
Slide Filing Box	Box of 25 pcs.	46-5120-00

Paraffin Block Filing Box for up to 350 Paraffin Blocks



- Extremely stable cardboard box for storage of approx. 350 paraffin blocks in 8 rows
- Stopper to avoid tumbling and slipping
- Box and cover with printed label
- Material: cardboard, white
- Dimensions (W/D/H): 360 x 290 x 50 mm

Type	Purchasing Unit	Category No.
Paraffin Block Filing Box	Box of 25 pcs.	46-5110-00

SAT 04 Slide Filing Maps



- Slide filing map for the filing of specimen of special scientific interest in a plastic map with 4 pockets for slides and 1 pocket for report
- Including 100 white report cards
- Dimensions: Filing map (L/W): 155 x 107 mm
Box (W/D/H): 210 x 165 x 115 mm
- Backup report cards in different colors available upon request

Type	Purchasing Unit	Category No.
SAT 04	Box of 100 pcs.	46-5130-00

Slide Filing Box



- Wooden frame with black leatherette paper cover
- For microscope slides 76 x 26 mm
- Toothed strip with black numerical print
- Lid with affixed index

Type	Purchasing Unit	Category No.
For 25 slides	1 pc.	46-5040-00
For 50 slides	1 pc.	46-5041-00
For 100 slides	1 pc.	46-5042-00

Stackable Filing System MICROGLASS/MICROBLOCK for Microscope Slides or Paraffin Blocks, Made in EU



Microscope Slide Filing System MICROGLASS

- Modular, space-saving filing system made of powder-coated sheet steel
- Fits microscope slides 76 x 26 mm in 14 individually extendable drawers per row
- 100% extendable, easily removable for filling at the workstation
- Color: grey-white
- Capacity: up to 6,000 microscope slides
- Dimensions (W/D/H): 485 x 480 x 145 mm

Type	Purchasing Unit	Category No.
MICROGLASS	1 pc.	47-5105-00



Paraffin Block Filing System MICROBLOCK

- Modular, space-saving filing system made of powder-coated sheet steel
- Fits standard paraffin blocks in 14 individually extendable drawers per row
- 100% extendable, easily removable for filling at the workstation
- Color: grey-white
- Capacity: up to 860 microscope slides
- Dimensions (W/D/H): 485 x 480 x 90 mm

Type	Purchasing Unit	Category No.
MICROBLOCK	1 pc.	47-5100-00



Cover for Filing System

- Cover plate for **MICROGLASS** and **MICROBLOCK** system
- Color: grey-white
- Dimensions (W/D/H): 485 x 480 x 28 mm

Type	Purchasing Unit	Category No.
Lid	1 pc.	47-5101-00



Base for Filing System

- Base for **MICROGLASS** and **MICROBLOCK** system
- Color: grey-white
- Dimensions (W/D/H): 485 x 480 x 70 mm

Type	Purchasing Unit	Category No.
Base	1 pc.	47-5102-00

SureThin® Processor

For preparation of Liquid Based Cytology compounds

Design subject to change



The **SureThin® Processor** helps processing cytological smears in the laboratory. With this device, the cells from the sample vials can be prepared for microscopic observation. To do so, the sample vial containing the cells that are to be examined, is inserted into the processor; a suitable filter and slide are also placed. The cell mass is loosened by rotation and then sucked onto the filter by using a vacuum. The filter has a membrane on which the diagnostic material sticks and is then pressed onto a slide. The finished slide is placed in a fixative liquid and can then be removed for microscopic observation. Excess fluid is caught in a waste bottle that can easily be removed for cleaning.

The **SureThin® Processor** is operated via digital control panel that also shows the current status during the process. The processor door has a large window that makes it easy to observe the process while running. To open the door, it is slid open to the side, making it easy to load and unload the processor.

Suitable consumables are available single or as **SureThin® Gyn-Kits**, containing sample vials with methanol solution, microscope slides, filters and PAP smear brushes.

Technical Data:

SureThin® Processor:

Cat. No. 93-1000-00

Dimensions overall (W/D/H): 510 x 510 x 340 mm

Dimensions Waste Bottle (W/D/H): 150 x 430 x 150 mm

Weight: 50 kg

Power Supply: 240V / 50Hz / 200VA

SureThin® Gyn-Kit



SureThin® Gyn-Kit 1:

500 Sample Vials

500 Microscope Slides

500 Filters

500 Cervix Brushes

Type	Purchasing Unit	Category No.
SureThin® Gyn-Kit	Kit of 500 tests	90-1400-00

SureThin® Sample Vials



- Sample Vials for transport of extracted cells
- Filled with 20 ml **SureThin®** Fixative Solution
- For use for gynaecological and non-gynaecological application

Type	Purchasing Unit	Category No.
SureThin® Vial	Pack of 100 pcs.	90-1429-02

SureThin® Filter

For different applications

- #1: Pink Filter for gynaecological applications
- #2: Blue Filter for non-gynaecological applications
- #3: Yellow Filter for urine applications



Type	Purchasing Unit	Category No.
Gyn Filter	Pack of 100 pcs.	90-1425-00
Non-Gyn Filter	Pack of 100 pcs.	90-1425-01
Urine Filter	Pack of 100 pcs.	90-1426-00

SureThin® Solutions

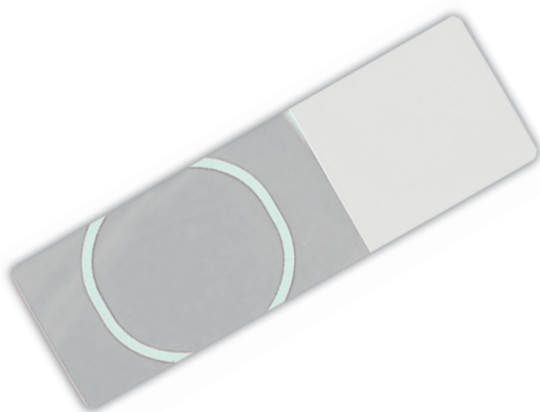


- **SureThin®** Fixative Solution for gynaecological applications
- **SureThin®** Lysis Solution for non-gynaecological applications
- Bottle of 926 ml

Type	Purchasing Unit	Category No.
Fixative Solution	Bottle of 926 ml	90-1437-00
Lysis Solution	Bottle of 926 ml	90-1631-00

SureThin® Microscope Slides

- Slides with large white circular marking
- Optimized for use with the **SureThin®** method in the **SureThin®** Processor



Type	Purchasing Unit	Category No.
SureThin® Slides	Box of 100 pcs.	90-1428-01

SAFEPREP® Gyn-Kits

For staining of 480 monolayers

**SAFEPREP® Gyn-Kit 1:**including Sample Vials and Cervix Brushes

- 4 bottles of 480 ml Density Gradient Fluid
- 1 bottle of 480 ml Hematoxyline
- 1 bottle of 480 ml OG/EA Stain
- 480 Pipette Tips
- 480 Settling Chambers
- 480 Syringes for **SAFEPREP®**
- 480 Coated Microscope Slides
- 480 Centrifuge Tubes
- 2 boxes of 96 Aspiration Tips
- 500 Sample Vials
- 500 Cervix Brushes

SAFEPREP® Gyn-Kit 2:without Sample Vials and Cervix Brushes

- 4 bottles of 480 ml Density Gradient Fluid
- 1 bottle of 480 ml Hematoxyline
- 1 bottle of 480 ml OG/EA Stain
- 480 Pipette Tips
- 480 Settling Chambers
- 480 Syringes for **SAFEPREP®**
- 480 Coated Microscope Slides
- 480 Centrifuge Tubes
- 2 boxes of 96 Aspiration Tips

Type	Purchasing Unit	Category No.
SAFEPREP Gyn-Kit 1	Kit for 480 tests	90-1350-00
SAFEPREP Gyn-Kit 2	Kit for 480 tests	90-1360-00

SAFEPREP® Sample Vials

- Sample vials prefilled with ethanol based fixative solution
- Not classified as dangerous goods, therefore mailable by post



Type	Purchasing Unit	Category No.
SAFEPREP® Vials	Box of 500 pcs.	42-1541-00

Cleaning Compound decon 90®

© registered trademark of decon Deutsche Energie-Consult GmbH

- Highly concentrated cleaning compound for laboratories
- Phosphate-free and biodegradable
- Suitable for all cleaning purposes, especially decontamination
- Not classified as dangerous good



Type	Purchasing Unit	Category No.
decon 90®	Can of 1 liter	40-9001-00

Staining Set for Cytology

For use with **SAFEPREP®** Gyn-Kits



- Modified staining set for cytological application, consisting of
 - Hematoxyline, 1 bottle of 480 ml
 - OG/EA Stain, 1 bottle of 480 ml (dangerous goods)
- Complementary to **SAFEPREP®** Gyn-Kits

Type	Purchasing Unit	Category No.
Staining Set	1 Set	90-1560-00

Density Reagent



- For determination of cell components
- Embedding the components according to their density in layers within the fluid

Type	Purchasing Unit	Category No.
Density Reagent	1 bottle of 480 ml	90-1550-00

Buffered TRIS pH 8.0



- For buffering of rinsing and washing solutions
- One package is sufficient to produce one liter of buffered stock solution from demineralised water
- 5 x 5 liters of demineralized water (200 ml each to 5 liters) can be buffered with the stock solution

Type	Purchasing Unit	Category No.
Buffered TRIS	1 bag	42-1570-00

Cervix Brush With Shedding Help



- Extraction of the required cell material in one smooth movement
- With the flexible bristles, the Cervix Brush is suitable for every cervix shape
- Easy removal of the brush head with a plastic rail on the shaft for shedding
- Non-sterile packing
- Length: 21 cm

Type	Purchasing Unit	Category No.
Cervix Brush	Pack of 2 x 50 pcs.	92-0300-00

Gyn-Brush

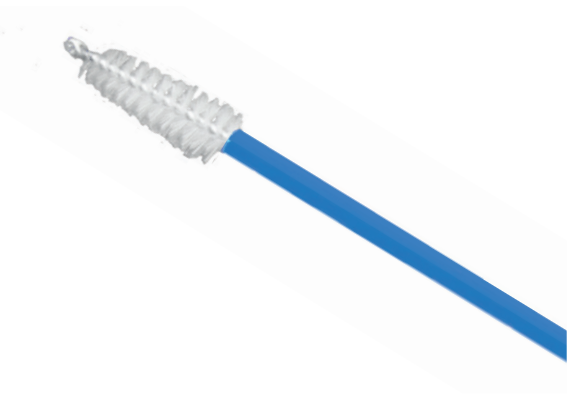
- Gynaecological smear brush for preventive examination
- Length: ca. 20 cm



Type	Purchasing Unit	Category No.
Gyn-Brush	Pack of 100 pcs.	46-0710-00

Gyn-Brush Plus

- Gynaecological smear brush for preventive examination
- Length: ca. 20 cm
- With safety tip



Type	Purchasing Unit	Category No.
Gyn-Brush Plus	Pack of 100 pcs.	46-0720-00

Ayres Spatula Smear Instrument

- Wooden spatula for gynaecological examination
- Shaped like a finger



Type	Purchasing Unit	Category No.
Ayres Spatula	Box of 1,000 pcs.	46-0740-00



Staining Solutions for Cytology on page 10!

COT 20



The **COT 20** staining machine with its proven technology of the assembly line principle offers invaluable advantages for histological and cytological laboratories that have a high throughput of specimens to be stained in the course of a day. The staining capacity of the **COT 20** is up to 1,000 specimens per hour.

Many features, like the dwell and drip time and staining duration are individually adjustable. Carryover of staining solutions is reduced to a minimum.

The **COT 20** comes with up to 27 staining stations, 16 of them are prepared for running watering via a central water connection. The staining baths have a capacity of 250 ml. Two storage containers are integrated in the working plate, each with a capacity for 10 slide baskets.

For insensitive samples, the effectiveness of the solvents can be supported by using the agitation function. This can be easily switched on and off using a switch on the front of the device.

The flexibility of the **COT 20** allows a multitude of variations, use of all common staining solutions and intermediates, as well as the realization of all cytological and histological routine staining. Depending on the laboratory requirements, there are three different models to choose from, which can either be connected to existing ventilation systems or feature an already integrated activated carbon filter.

<i>Accessories</i>	<i>Purchasing Unit</i>	<i>Category No.</i>
Slide basket with hanger	1 pc.	11-0054-00
Hanger replacement	1 pc.	22-2000-00
Staining trough without running water	1 pc.	35-2002-00
Staining trough with running water	1 pc.	35-2001-00
Universal activated carbon	Bucket of 5 kg	46-6040-00

Technical Data:

COT 20.000:	Model:	Standard with open side panels
	Capacity:	Magazine for up to 4 baskets
	Staining Stations:	23 inside
		4 in magazine
	Basket Capacity:	20 slides
	Staining Troughput:	2 min. cycle: up to 500 slides/hour
		1 min. cycle: up to 1,000 slides/hour
	Staining Cycle:	adjustable, 20 sec. to 12 min.
	Draining Cycle:	adjustable, 3 sec. to 60 sec.
	Agitation:	manual on/off
	Dimensions (W/D/H):	1,520 x 570 x 440 mm
	Weight:	55 kg
	Power Supply:	230V / 50 - 60 Hz / 150VA
Cat. No. 03-2000-00		115V / 50 - 60 Hz / 150VA
Cat. No. 03-2010-00		

COT 20.200:	Model:	Closed with closed side panels
	Staining Stations:	23 inside
	Dimensions (W/D/H):	1,300 x 570 x 440 mm
	Power Supply:	230V / 50 - 60 Hz / 150VA
Cat. No. 03-2020-00		115V / 50 - 60 Hz / 150VA
Cat. No. 03-2030-00		

Further technical data consistent with **COT 20.000**

COT 20.400:	Model:	Closed with integrated activated carbon filter
	Staining Stations:	23 inside
	Dimensions (W/D/H):	1,300 x 700 x 440 mm
	Power Supply:	230V / 50 - 60 Hz / 150VA
Cat. No. 03-2040-00		115V / 50 - 60 Hz / 150VA
Cat. No. 03-2050-00		

Further technical data consistent with **COT 20.000**

TST 44



The programmable **TST 44** Slide Staining Automat combines speed with flexibility, bringing easy accurate automation of routine and special staining to the laboratory.

The **TST 44** got its name from the 44 stations for staining, loading and unloading, water and drying that are featured in the device. Different models are available, responding to the various needs of different laboratories. As with the well-known linear stainers, the **TST 44** can be loaded continuously. If needed, the **TST 44** can come with a transfer station to connect with the **ACS 720** Coverslipping Machine (see **TCA 44-720**).

The large number of available stations allows different staining protocols to be processed in parallel without changing reagents or outsourcing individual steps such as dewaxing. It's also possible for fast logs to overtake slower logs. This is an important factor in scheduling the laboratory routine and planning the use of material. After the last program step for flowing irrigation, the water supply stops automatically to avoid any consequences in this regard.

Thanks to 20 staining protocols, of which up to 12 can operate parallelly if identical, the **TST 44** can achieve a staining performance of up to 500 slides per hour, the results of which are always of consistently high quality. Continuous loading for baskets of 30 slides supports great efficiency.

<i>Accessories</i>	<i>Purchasing Unit</i>	<i>Category No.</i>
Activated Carbon Filter (disposable)	1 pc.	67-1001-00
Staining trough, volume: 360 ml	1 pc.	35-1001-00
Filter Pads, length: 115 mm	Pack of 100 pcs.	46-6031-00
Volume reducing block for staining trough, plastic	1 pc.	28-1008-00
Standard 30 slide basket for TST 44 and ACS 720, plastic, with affixed hanger	1 pc.	24-1140-00
Simple 30 slide basket for TST44 only (not with ACS720), plastic, without hanger	1 pc.	28-1061-00
Hanger for baskets 28-1061-00	1 pc.	22-5007-02
30 slide basket, stainless steel, without hanger	1 pc.	17-5030-01
Hanger for basket 17-5030-01	1 pc.	22-1001-00
20 slide basket, stainless steel, without hanger	1 pc.	48-9020-00
Hanger for basket 48-9020-00	1 pc.	22-1002-00

Technical Data:

TST 44.000:	Max. number of protocols:	20, up to 12 for parallel operating
	Program steps:	40 per staining protocol
	Choices per step:	Bath, time (1 sec. to 59 min.)
	Number of stations:	44
	including:	4 Loading Stations 4 Unloading Stations 6 Water Baths 30 Staining Stations with agitation
	Bath volume:	360 ml, can be reduced to 260 ml
	Dimensions (W/D/H):	1,210 x 670 x 640 mm
	Weight:	118 kg
Cat. No. 04-4400-02	Power supply:	230V / 50 - 60 Hz / 100VA
Cat. No. 04-4410-02		115V / 50 - 60 Hz / 120VA
TST 44.200:	Number of stations:	44
	including:	4 Loading Stations 4 Unloading Stations 4 Water Baths 2 Drying Stations (temperature adjustable from +40 °C to +90 °C) 30 Staining Stations with agitation
Cat. No. 04-4420-02	Power supply:	230V / 50 - 60 Hz / 100VA
Cat. No. 04-4430-02		115V / 50 - 60 Hz / 100VA
Further technical data consistent with TST 44.000		
TST 44.000 C:	Number of stations:	44
	including:	4 Loading Stations 4 Unloading Stations 6 Water Baths 30 Staining Stations with agitation
	Transfer station:	Automatic transfer of slide baskets to the coverslipping machine ACS 720
Cat. No. 04-4720-03	Power supply:	230V / 50 - 60 Hz / 120VA
Cat. No. 04-4730-03		115V / 50 - 60 Hz / 100VA
Further technical data consistent with TST 44.000		
TST 44.200 C:	Number of stations:	44
	including:	4 Loading Stations 4 Unloading Stations 4 Water Baths 2 Drying Stations (temperature adjustable from +40 °C to +90 °C) 30 Staining Stations with agitation
	Transfer station:	Automatic transfer of slide baskets to the coverslipping machine ACS 720
Cat. No. 04-4740-03	Power supply:	230V / 50 - 60 Hz / 100VA
Cat. No. 04-4755-03		115V / 50 - 60 Hz / 100VA
Further technical data consistent with TST 44.000		

TCA 44-720



Full automation from the staining process to the coverslipped tissue specimen slide is available for every laboratory with the combination of the **TST 44 C** Slide Staining Automat with the fast **ACS 720** Glass Coverslipper. Both instruments together as the **TCA 44-720** combination represent a continuous staining and coverslipping system. The automation and combination of both processes and the overall high throughput bring greater flexibility and the opportunity of restructuring internal processes thanks to the release of resources.

For the transfer process, an additional transfer station is not required as the devices are directly connected. With that, the manual moving of the slide holder is no longer necessary. The slide baskets can be taken out after the finished coverslipping process from the **ACS 720** directly.

Technical Data:

ACS 720:	Coverslipping Duration:	6 to 11 sec. per slide
Cat. No. 04-7200-04	Dispensing Volume:	30 - 150 µl
	Mounting Media Container:	Bottle of 500 ml
	Microscope Slide Size:	26 x 76 mm
	Microscope Slide Thickness:	0.9 to 1.2 mm
	Microscope Slide Capacity:	150 pcs., continuously
	Coverglass Size:	24 x 50 / 55 / 60 mm
	Coverglass Thickness:	0.95 to 1.05 mm
	Coverglass Container Capacity:	up to 300 pcs.
	Dimensions (W/D/H):	630 x 670 x 640 mm
	Weight:	65 kg
	Power Supply:	100-230V / 50 - 60 Hz / 400VA

For technical data of the Staining Automat, please see models **TST 44.000 C** and **TST 44.200 C** on page 25.

Accessories	Purchasing Unit	Category No.
Standard 30 slide basket for TST 44 and ACS 720, plastic, with affixed hanger	1 pc.	24-1140-00
Activated Carbon Filter (disposable)	1 pc.	67-1005-00
24 x 50 mm Coverglass Case	1 pc.	24-1350-02
24 x 55 mm Coverglass Case	1 pc.	24-1355-02
24 x 60 mm Coverglass Case	1 pc.	24-1360-02
Purge cap for ACS 720	Pack of 10 pcs.	48-9084-00

Twister

*Design subject to change



The automatic film coverslipper **Twister** impresses with easy application, great performance, and sleek and functional appearance.

The **Twister** is made for easy automated film coverslipping. It has two transparent front doors that allow observing the current process at any time from anywhere in the laboratory within sight. They give quick access, e.g. to replace the coverslipping film. All replacements are easy to carry out. The film length is set via a clear touch screen located top center on the front that also features a counter to keep track of the already finished coverslips as well.

Slide baskets with a capacity of 20 or 30 slides can be used for the process. They are automatically dispensed into the output compartment when all slides in the baskets are finished. With an average coverslipping time of 3 seconds, processing more than 1,000 slides per hour is possible.

Two bottles are used within the machine. One bottle contains xylene used for the coverslipping process. The amount of xylene used for the coverslips can be individually adjusted during operation with a knurled knob on the front. In addition, a waste bottle ensures that excess xylene is safely collected and and to be disposed of.

The **Twister** has an integrated activated carbon filter. Alternatively, it can be connected to existing ventilation system.

Technical Data:

Cat. No. 03-5000-00	Slide Basket Capacity:	20 or 30 pcs.
	Duration Coverslipping:	ca. 3 seconds/slide
	Volume Xylene Bottle:	500 ml
	Dimensions Coverfilm (W/L):	23 mm x 70 m
	Coverfilm Application Length:	45 - 60 mm
	Volume Waste Bottle:	100 ml
	Dimensions (W/D/H):	730 x 310 x 545 mm
	Weight:	65 kg
	Power Supply:	100 - 230V / 50 - 60 Hz / 460VA

Accessories	Purchasing Unit	Category No.
20 slide basket, with removable hanger, plastic	1 pc.	34-5050-00
30 slide basket for TST 44 and Twister, plastic, with removable hanger	1 pc.	24-1146-00
Film Cutter Blades	Pack of 5 pcs.	34-5001-00
Activated Carbon Filter (disposable)	1 pc.	67-1005-00
Xylene Bottle, 500 ml	1 pc.	34-5040-00
Waste Bottle, 100 ml	1 pc.	34-5035-00

RCM 9000



The **RCM 9000** is a highly efficient glass coverslipping automat, optimized for easy and quick use. With its reliable technology, histological and cytological specimens are processed fast, clean and reliable.

With a coverslipping speed of approx. 300 slides per hour, the **RCM 9000** is characterized by high throughput and flexibility. Slides can be loaded and unloaded continuously. An easy to use digital panel helps for quickly setting the operating parameters, e. g. coverslipping speed and dispensing volume.

The dispenser and pump assure consistent, bubble-free dispensing of the mounting media. To prevent the needle from drying out, it is automatically stored in in xylene. Suction for solvent vapors is integrated.

The device works quietly and with standard coverglass, microscope slides and mounting media. Slide holders of common routine stainers can be used in the **RCM 9000**.

Technical Data:

Cat. No. 45-9000-00	Coverslipping Duration:	12 to 20 sec./slide adjustable 7-shift speed
	Dispensing Volume:	0.04 to 0.2 cm ³ , adjustable
	Mounting Media Container:	commercially available or MEDITE standard container
	Coverglass Size, Standard:	24 x 40 / 50 / 55 / 60mm
	Coverglass Size, Optional:	24 x 32 / 36 mm 25 x 40 / 50 / 55 / 60 mm
	Dimensions (W/D/H):	500 x 540 x 640 mm
	Weight:	59 kg
	Power Supply:	230V / 50 - 60 Hz / 460VA

<i>Accessories</i>	<i>Purchasing Unit</i>	<i>Category No.</i>
Activated Carbon Filter (disposable)	1 pc.	67-1003-00
20 slide basket, stainless steel	1 pc.	48-9020-00
Inset for basket 48-9020-00	1 pc.	48-9021-00
30 slide basket, stainless steel	1 pc.	17-5030-01
30 slide basket, for Leica, Sakura and Bavimed automats, manual staining	1 pc.	48-9030-00
Inset for basket 17-5030-01 and 48-9030-00	1 pc.	48-9031-00
40 slide basket, stainless steel, for Shandon Varistain staining automat	1 pc.	48-9040-00
Inset for basket 48-9040-00	1 pc.	48-9041-00
Magazine for storing finished slides	1 pc.	48-9051-00
Xylene container	1 pc.	48-9050-00
24 x 50 mm coverglass container	1 pc.	48-9064-00
24 x 55 mm coverglass container	1 pc.	48-9065-00
24 x 60 mm coverglass container	1 pc.	48-9066-00
Oval purge cap	1 pc.	48-9083-00

TPC 15 Duo/Trio



The closed Tissue Processing Center **TPC 15** with 15 stations works safely and reliably in any laboratory environment. The device is available in two performance variants: with a capacity of 440 (**TPC 15 Duo**) or 660 (**TPC 15 Trio**) standard cassettes with otherwise same properties.

With the parallel processing of two or three sample baskets with different or the same programs and the high absorption capacity, a significant increase in productivity is achieved. Programs for biopsies can be processed quickly.

Program interruption with access to the samples is possible. The system saves 15 different programs, allowing weekend and short proocvols, paraffin recycling and basket cleaning programs.

The **TPC 15** has a suction device for solvent vapors with an integrated activated carbon filter for operating the device in a circulating air process and a connection for external ventilation. A power backup battery and safety protocol in case of emergency are integrated.

<i>Accessories</i>	<i>Purchasing Unit</i>	<i>Category No.</i>
Activated Carbon Filter (disposable)	1 pc.	67-1001-00
Magnetic stirrer	1 pc.	48-9020-00
Standard basket for up to 220 cassettes, without inset	1 pc.	11-1558-00
Basket for up to 220 cassettes	1 pc.	11-1552-00
Inset for basket 11-1552-00	1 pc.	11-1559-00
Organizer basket with insets for cassettes, for up to 160 cassettes	1 pc.	11-1553-00
Organizer basket with insets for cassettes, for up to 126 cassettes	1 pc.	11-1560-00
Solvent container	1 pc.	11-1550-00
Lid for solvent container	1 pc.	11-1551-00
Processing lid for solving container	1 pc.	11-1555-00

Technical Data:

TPC 15 Duo:	Capacity:	up to 440 cassettes
	Programming:	18 program memory locations (15 + 3 fix)
	Bath Contents:	up to 2.3 l
	Duration:	5 min. to 10 hrs.
	Temperature:	Paraffin: +40 °C to +70 °C
		Reagents: +40 °C to +50 °C
		Vacuum and pressure cycle
	Safety:	Emergency power supply in case of power failure, fume extraction with carbon filter for the adsorption of solvent, fumes and connection to an exhaust system, each station closed by a stainless steel lid
	Dimensions (W/D/H):	1,290 x 715 x 730 mm
	Weight:	139 kg
Cat. No. 04-1540-01	Power Supply:	230V / 50 - 60 Hz / 950VA
Cat. No. 04-1550-01		115V / 50 - 60 Hz / 950VA

TPC 15 Trio:	Capacity:	up to 660 cassettes
	Programming:	24 program memory locations (20 + 4 fix)
Cat. No. 04-1580-00	Power Supply:	230V / 50 - 60 Hz / 950VA
Cat. No. 04-1590-00		115V / 50 - 60 Hz / 950VA

Further technical data consistent with **TPC 15 Duo**.

TES Valida

Design subject to change



The 3-piece modular system **TES Valida** comes with three independent working sections that enable flexible positioning and provide convenient, quick and careful paraffin embedding of tissue specimen. Together, the three modules create a powerful system with a modern look. Thanks to the rounded edges, working at the station is comfortable for the user. The surfaces can be easily cleaned. Each unit can be programmed using a touch control.

The upper part of the thermal unit has a spacious preheating chamber for embedding molds. In the lower area of the work surface is a removable paraffin bowl made of stainless steel. It is deep enough to accommodate embedding cassettes and almost any type of sample basket. A stainless steel cover ensures temperature stability.

The dispenser unit has a paraffin tank with a volume of 4.6 liters. With the adjustable lamp, every work process can be illuminated as required. In addition, the dispenser unit offers two heated depots for 3 forceps each on the right and left of the outlet tap. The square peltier element with the size of 40 x 40 mm can reach down to -5 ° C. There is additional storage space on the flattened outlet nozzle. At the bottom of the dispenser unit is a basin to collect excess paraffin. A foot switch included in the scope of delivery completes the unit.

The cooling unit has a generous stainless steel surface. It offers space for storage of up to 100 paraffin blocks to cool them at a temperature of down to -15 °C.

<i>Accessories</i>	<i>Purchasing Unit</i>	<i>Category No.</i>
Magnifier, 4 diopters, for dispenser unit	1 pc.	46-0088-01
Foot switch for dispenser unit	1 pc.	11-8207-00
Forceps, tip diameter 1 mm	1 pc.	43-0011-00
Forceps, tip diameter 2 mm	1 pc.	43-0012-00
Forceps, tip diameter 4 mm	1 pc.	43-0014-00
Forceps, tip diameter 0.5 mm	1 pc.	43-0015-00
Heat protection for dispenser valve	1 pc.	37-0479-00

Technical Data:

Cooling Unit:	Dimensions overall (W/D/H):	500 x 600 x 345 mm
	Dimensions cool plate (W/D/H):	500 x 264
	Temperature:	-15 °C to +15 °C
	Weight:	30 kg
	Power Supply:	230V / 50 - 60 Hz / 320VA
Cat. No. 02-7741-00		115V / 50 - 60 Hz / 320VA
Cat. No. 02-7751-00		

Dispenser Unit:	Volume paraffin tank:	4.6 l
	Temperature paraffin tank:	+30 °C to +70 °C
	Temperature peltier element:	ca. -5 °C
	Dimensions peltier element:	40 x 40 mm
	Dimensions overall (W/D/H):	360 x 600 x 345 mm
	Forceps heating:	2 depots for 3 forceps each
	Weight:	26 kg
Cat. No. 02-7725-00	Power Supply:	230V / 50 - 60 Hz / 450 VA
Cat. No. 02-7735-00		115V / 50 - 60 Hz / 450 VA

Thermal Unit:	Dimensions overall (W/D/H):	360 x 600 x 345 mm
	Dimensions preheating chamber (W/D/H):	300 x 210 x 115 mm
	Temperature preheating chamber:	+30 °C to +70 °C
	Temperature paraffin basin:	+30 °C to +75 °C
	Weight:	20 kg
	Power Supply:	230V / 50 - 60 Hz / 750VA
Cat. No. 02-7760-00		115V / 50 - 60 Hz / 750VA
Cat. No. 02-7770-00		

TES 99

White version coming soon



The modular paraffin embedding system **TES 99** consists of three independent working sections that enable flexible positioning and provide convenient, quick and careful paraffin embedding of tissue specimen. The units can be individually adjusted, even though they are optically from a single source. The settings are done using easy-to-use touch elements. The robust surfaces can be easily cleaned.

The upper part of the thermal unit has a spacious preheating chamber for embedding molds. In the lower area of the work surface there is a removable paraffin basing for all types of embedding cassettes, which can be covered with a stainless steel lid.

The paraffin tank of the dispenser unit has a volume of 3.5 liters. A lamp that can be adjusted as required enables a good view of the specimens at all times. Connections and heating areas for forceps are located to the left and right of the outlet tap. The peltier spot has a diameter of 40 mm with a cooling capacity down to -5 °C. At the bottom of the dispenser unit is a basin that collects excess paraffin. A foot switch for easy operation of the outlet tap is also part of the system.

The cooling unit has a large stainless steel surface that can be cooled down to -15 °C. The space is sufficient for about 110 paraffin blocks. A small version of the cooling unit is also available with a cooling capacity of around -10 °C.

<i>Accessories</i>	<i>Purchasing Unit</i>	<i>Category No.</i>
Magnifier, 4 diopters, for dispenser unit	1 pc.	46-0088-01
Foot switch for dispenser unit	1 pc.	11-8207-00
Forceps, tip diameter 1 mm	1 pc.	43-0011-00
Forceps, tip diameter 2 mm	1 pc.	43-0012-00
Forceps, tip diameter 4 mm	1 pc.	43-0014-00
Forceps, tip diameter 0.5 mm	1 pc.	43-0015-00

Technical Data:

Cooling Unit:	Dimensions overall (W/D/H):	500 x 570 x 300 mm
	Dimensions cool plate (W/D/H):	500 x 260
	Temperature:	-15 °C to +15 °C
	Weight:	25 kg
	Power Supply:	230V / 50 - 60 Hz / 320VA
Cat. No. 02-9941-00		115V / 50 - 60 Hz / 320VA
Cat. No. 02-9951-00		
Small Cooling Unit:	Dimensions overall (W/D/H):	360 x 570 x 300 mm
	Dimensions cool plate (W/D/H):	360 x 260
	Temperature:	-10 °C to +15 °C
	Weight:	20 kg
	Power Supply:	230V / 50 - 60 Hz / 150VA
Cat. No. 02-9942-00		115V / 50 - 60 Hz / 150VA
Cat. No. 02-9952-00		
Dispenser Unit:	Volume paraffin tank:	3.5 l
	Temperature paraffin tank:	+30 °C to +70 °C
	Temperature peltier element:	ca. -5 °C
	Dimensions peltier element:	40 mm Ø
	Dimensions overall (W/D/H):	360 x 570 x 300 mm
	Forceps heating:	2 depots for 3 forceps each
	Weight:	22 kg
	Power Supply:	230V / 50 - 60 Hz / 350 VA
Cat. No. 02-9925-00		115V / 50 - 60 Hz / 350 VA
Cat. No. 02-9935-00		
Thermal Unit:	Dimensions overall (W/D/H):	360 x 570 x 300 mm
	Dimensions preheating chamber (W/D/H):	305 x 205 mm
	Temperature preheating chamber:	+30 °C to +70 °C
	Temperature paraffin basin:	+30 °C to +75 °C
	Weight:	20 kg
	Power Supply:	230V / 50 - 60 Hz / 750VA
Cat. No. 02-9960-00		115V / 50 - 60 Hz / 750VA
Cat. No. 02-9970-00		

Cryostat M630

Image may vary.

The **Cryostat M630** is characterized by its high-precision semi-automatic rotary microtome and the very fast cooling. Thanks to the user-oriented design, operation is intuitive. The ergonomic features allow both sitting and standing use. Low energy consumption and significantly reduced operating noise are additional remarkable features

The various parameters are set using modern touch screens. The device reaches the sectioning temperature faster than average.

The illuminated cooling chamber has space for up to 15 samples, including two Peltier elements for rapid cooling. A heated glass pane closes the cooling chamber. Through the targeted use of heat, no fogging forms on it, giving a clear view of the cooling chamber.

Object feed and section thickness are controlled by a high-precision stepping motor. Free vertical movement is supported. The smooth-running handwheel on the right supports simple but precise application. UVC disinfection is integrated as standard.

For regular evaporator defrosting, which can be done manually or automatically, the **Cryostat M630** has an easily accessible condensation container.



Technical Data:

Microtome:

Sectioning range: from 1 µm to 99 µm in 1 µm steps
Trimming range: from 5 µm to 100 µm in 5 µm steps
from 100 µm to 500 µm in 50 µm steps

Specimen retraction: 25 µm
Horizontal specimen feed: 30 mm
Vertical lift: 70 mm
Specimen fine orientation: 360° in Z and 8° in X and Y axes

Cryo Chamber:

Cooling capacity: down to -35 °C (+/- 1 °C)
Defrosting: automatic or manual, max. +6 °C
Rapid Freezing Rail: 15 positions, 2 with peltier cooling
temperature ca. -20 °C below chamber temperature

Overall:

Dimensions (W/D/H): 1,200 x 650 x 840 mm
Weight: ca. 127 kg
Power supply: 230V / 50 - 60 Hz
100V / 50Hz
115V / 60Hz

Cat. No. 04-5300-01

Accessories	Purchasing Unit	Category No.
Standard knife carrier N	1 pc.	24-3500-00
Cryostat blade holder, low profile	1 pc.	39-0124-00
Cryostat blade holder, high profile	1 pc.	39-0125-00
Brush for section stretching	1 pc.	46-0921-00
Magnetic brush for safe blade handling and cleaning	1 pc.	51-0046-00



Microtome M530

The **Microtome M530** is suitable for a wide range of requirements in the clinical laboratory and research laboratory. It combines high performance with an ergonomic design. The ergonomically designed device is operated with a smooth-running handwheel with locking option.

The high-precision stepping motor technology enables the **Microtome M530** to cut samples embedded in paraffin quickly, safely and evenly. Its torsion-free basic construction ensures optimal stability.

Settings, e.g. sectioning range and rate, are entered via an easy-to-use menu. Various values can be shown in the associated LCD display.

At the front there is a large-volume section waste tray, which is removable and ergonomically designed. Object clamps and blade holders are available separately.

Technical Data:

Sectioning range:	from 0.5 μ m to 5,0 μ m in 0.5 μ m steps
Trimming range:	from 5 μ m to 100 μ m in 5 μ m steps from 100 μ m to 500 μ m in 50 μ m steps
Horizontal specimen feed:	30 mm
Specimen retraction:	25 μ m (on/off)
Vertical lift:	70 mm
Dimensions incl. tray (W/D/H):	377 x 530 x 281 mm
Weight:	ca. 34 kg
Cat. No. 03-4000-01	Power supply: 100 - 240V / 50 - 60Hz

Accessories	Purchasing Unit	Category No.
Universal cassette clamp for standard cassettes	1 pc.	24-3232-00
Standard object clamp	1 pc.	24-3030-02
Object clamp for super mega cassettes	1 pc.	24-3177-01
Standard knife carrier N	1 pc.	24-3500-00
Microtome blade holder, low profile	1 pc.	24-3230-00
Microtome blade holder, high profile	1 pc.	24-3457-00
Object cooling for microtomes	1 pc.	24-3155-01
Brush for section stretching	1 pc.	46-0921-00
Magnetic brush for safe blade handling and cleaning	1 pc.	51-0046-00
Oil for slideways, small	Bottle of 100 ml	40-2100-00
Oil for slideways, big	Botte of 1,000 ml	40-2200-00

Microtome A550



The fully automatic **Microtome A550** guarantees maximum reliability thanks to its high sectioning stability and precision and offers a wide range of setting options for every laboratory. The ergonomically designed device can be operated with a handwheel and a foot switch.

Thanks to the intelligent memory positioning, previously saved sectioning positions can be reached again at the push of a button. The microtome can be operated in five different modes. The sectioning rate is between 1 - 150 mm/s.

At the front there is a large-volume section waste tray, which is removable and ergonomically designed. Object clamps and blade holders are available separately.

Technical Data:

Sectioning range:	from 0.25 µm to 2.0 µm in 0.25 µm steps from 2.0 µm to 5.0 µm in 0.5 µm steps from 5 µm to 50 µm in 1 µm steps
Trimming range:	from 1 µm to 20 µm in 1 µm steps from 20 µm to 100 µm in 5 µm steps from 100 µm to 500 µm in 10 µm steps
Sectioning rate:	1 - 150 mm/s
Horizontal specimen feed:	30 mm
Specimen retraction:	25 µm (on/off)
Vertical lift:	70 mm
Sectioning modes:	manual, continuous, single, step stroke, permanent
Dimensions incl. tray (W/D/H):	530 x 430 x 310 mm
Weight:	ca. 38 kg
Cat. No. 03-4100-01 Power supply:	100 - 240V / 50 - 60Hz

Accessories	Purchasing Unit	Category No.
Universal cassette clamp for standard cassettes	1 pc.	24-3232-00
Standard object clamp	1 pc.	24-3030-02
Object clamp for super mega cassettes	1 pc.	24-3177-01
Standard knife carrier N	1 pc.	24-3500-00
Microtome blade holder, low profile	1 pc.	24-3230-00
Microtome blade holder, high profile	1 pc.	24-3457-00
Foot switch for Microtome A550	1 pc.	24-3331-01
Object cooling for microtomes	1 pc.	24-3155-01
Brush for section stretching	1 pc.	46-0921-00
Magnetic brush for safe blade handling and cleaning	1 pc.	51-0046-00
Oil for slideways, small	Bottle of 100 ml	40-2100-00
Oil for slideways, big	Botte of 1,000 ml	40-2200-00



Microtome M380

The manual **Microtome M380** can be used flexibly regardless of the availability of a power connection. The torsion-free basic construction ensures optimal stability. Thanks to the smooth-running handwheel, operation is pleasantly easy.

The **Microtome M380** includes a large-volume section waste tray that is easy to clean. Object clamps and blade holders are available separately.

Technical Data:

Sectioning range:	from 0.5 μm to 2.0 μm in 0,5 μm steps
Trimming range:	from 2 μm to 10 μm in 1 μm steps from 10 μm to 20 μm in 2 μm steps from 20 μm to 60 μm in 5 μm steps
Horizontal specimen feed:	30 mm
Specimen retraction:	25 μm (on/off)
Vertical lift:	70 mm
Dimensions incl. tray (W/D/H):	530 x 377 x 281 mm
Cat. No. 03-4200-00 Weight:	ca. 30 kg

Accessories	Purchasing Unit	Category No.
Universal cassette clamp for standard cassettes	1 pc.	24-3232-00
Standard object clamp	1 pc.	24-3030-02
Object clamp for super mega cassettes	1 pc.	24-3177-01
Standard knife carrier N	1 pc.	24-3500-00
Microtome blade holder, low profile	1 pc.	24-3230-00
Microtome blade holder, high profile	1 pc.	24-3457-00
Brush for section stretching	1 pc.	46-0921-00
Magnetic brush for safe blade handling and cleaning	1 pc.	51-0046-00
Oil for slideways, small	Bottle of 100 ml	40-2100-00
Oil for slideways, big	Botte of 1,000 ml	40-2200-00

COP 30



The Tissue Cooling Plate **COP 30** enables cooling of 60 to 100 embedding molds or paraffin blocks simultaneously. The environmental-friendly, quiet and powerful cooling unit ensures the maximum cooling temperature of -15 °C within a few minutes.

The cooling plate is made of stainless steel and the outer rim is heated to avoid condensation. Precise electronic temperature control ensures temperature consistency. Even with a large number of samples at once, the cooling plate keeps the temperature steady.

Technical Data:

Dimensions overall (W/D/H): 450 x 600 x 235 mm

Dimensions cool plate (W/D/H): 440 x 300 x 47 mm

Temperature range: -15 °C to +15 °C

Weight: 23 kg

Cat. No. 02-1030-01 Power Supply: 230V / 50 - 60 Hz / 300VA

Cat. No. 02-1130-00 115V / 50 - 60 Hz / 300VA

TKF 22



The Cooling Unit **TKF 22** is used for fast cooling of embedding molds and paraffin blocks in the histological laboratory. A seamless cooling tray made of stainless steel enables cooling of about 180 paraffin blocks simultaneously. The powerful cooling unit ensures the maximum temperature of -35 °C within a few minutes. The device comes with electronic temperature regulation for accuracy.

Technical Data:

Dimensions overall (W/D/H): 400 x 645 x 250 mm

Dimensions cool plate (W/D/H): 300 x 327 x 40 mm

Temperature range: -35 °C to +15 °C

Weight: 23.5 kg

Cat. No. 02-3000-00 Power supply: 230V / 50 - 60 Hz / 450VA

Cat. No. 02-3100-00 115V / 50 - 60 Hz / 450VA

Accessories	Purchasing Unit	Category No.
Stainless steel tray for 20 paraffin blocks	Set of 7 trays	28-8242-00
Glass lid for temperature stability	1 pc.	28-8241-00

MKF 20



The Cooling Unit **MKF 20** is designed for seamless installation in the work bench. The temperature regulation unit on the bottom can be rotated 90°, making the **MKF 20** suitable to fit in either longitudinal or laterally according to individual needs.

The powerful cooling unit reaches the maximum temperature of -10 °C on the stainless steel surface within a few minutes. Precise electronic temperature gauges ensure accurate temperature consistency for perfect adjustment to particular sectioning needs.

Technical Data:

Dimensions cooling plate (W/D):	350 x 230 mm
Dimensions table cutout (W/D):	330 x 210 mm
Installation depth:	320 mm
Temperature range:	-10 °C to +15 °C
Weight:	15 kg

Cat. No. 02-2000-00	Power Supply:	230V / 50 - 60 Hz / 125VA
Cat. No. 02-2100-00		115V / 50 - 60 Hz / 180VA

USE 33

Design subject to change



By using the ultrasonic technology of the **USE 33**, crystalline structures of calcium phosphate, magnesium phosphate and calcium carbonate are fast and purposefully broken apart. This leads to quick and cell-protecting decalcification.

Diffusion processes of fixatives, decalcification media and intermedia are significantly accelerated. Adjustable, sufficiently dimensioned cooling ensures utmost morphology.

Suitable sample inserts and jars are separately available. To get the best possible results, we recommend the decalcifying solutions **USERAPID** and **USEDECALC** (see p. 13).

Technical Data:

Process timer:	programmable, 1 min. to 100 hrs.
Timer:	programmable: Start time, weekly program three separate timing programs allow defining individual settings for each day or method
Output:	200 W
Bath volume:	Up to 13.5 l carrier fluid Sample inserts for 4, 9 and 49 sample jars with a volume of 20 to 800 ml
Dimensions (W/D/H):	450 x 600 x 350 mm
Temperature range:	ca. +16 °C to room temperature
Weight:	28 kg
Cat. No. 03-3300-00	Power supply: 230V / 50 - 60 Hz / 400VA
Cat. No. 03-3310-00	115V / 50 - 60 Hz / 400VA

Accessories	Purchasing Unit	Category No.
Sample Insert no. 1, incl. sampling jars, number of samples: 4	1 pc.	28-8252-00
Sampling jar for Sample Insert no. 1, number of samples: 4, Glass jar DURAN with spout, Ø 93 mm, H: 110 mm, jar volume: ca. 800 ml, max sampling size: 250 cm ³	1 pc.	46-1027-00
Sample Insert no. 2, incl. sampling jars, number of samples: 9	1 pc.	28-8253-00
Sampling jar for Sample Insert no. 2, number of samples: 9, Glass jar DURAN with spout, Ø 51 mm, H: 85 mm, jar volume: ca. 150 ml, max sampling size: 40 cm ³	1 pc.	46-1026-00
Sample Insert no. 3, incl. sampling jars, number of samples: 49	1 pc.	28-8254-00
Sampling jar for Sample Insert no. 3, number of samples: 49, glass jar DURAN with spout, Ø 25 mm, H: 40 mm, jar volume: ca. 20 ml, max sampling size: 5 cm ³	1 pc.	46-1028-00
Lid for sample inserts	1 pc.	28-8250-00

TDO Sahara



The **TDO SAHARA** with touch temperature controller and integrated timer offers space for up to 48 plastic slide holders in its spacious drying chamber. The stainless steel grids and drip tray located in the drying chamber are easy to remove for cleaning.

The drying time can be adjusted from one minute to 99 hours 59 minutes or defined as endless operation. The temperature can be variably adjusted from +20 °C to +80 °C using the touch temperature controller. The current temperature can be read on the digital display.

A large glass window in the door gives the user a clear view of the samples in the drying chamber at all times. With sensitive material, the process does not have to be interrupted to check the progress.

The **TDO SAHARA** is convectional. A disposable charcoal filter helps with solvent fumes.

Technical Data:

	Programming options:	drying time from 1 min. to 99 hrs., or indefinite
	Dimensions overall (W/D/H):	445 x 368 x 480 mm
	Drying chamber (W/D/H):	414 x 273 x 280 mm
	Temperature range:	+20 °C to + 80 °C, adjustable in 1 °C steps
	Weight:	28 kg
Cat. No. 02-6800-00	Power supply:	230V / 50 - 60 Hz / 1250VA
Cat. No. 02-6900-00		115V / 50 - 60 Hz / 1250VA

Accessories	Purchasing Unit	Category No.
Carbon filter (disposable)	1 pc.	67-1006-00

TAZ 19



The **TAZ 19** is a safe work station for fume adsorbing with down-draught extraction, especially suitable for microscope slide coverslipping, histological and pathological preparations, and filling and decanting of solvents. The continuously adjustable adsorbing capacity ensures perfect adaptation of the individual laboratory needs. The **TAZ 19** is available in three different versions, one with a connection to existing exhaust systems.

Technical Data:

TAZ 19.000	Filter:	Filter casing with one package carbon for xylene
	Dimensions overall (W/D/H):	620 x 485 x 405 mm
	Dimensions work plate (W/D/H):	590 x 310 x 40 mm
	Weight:	20 kg
Cat. No. 02-1900-00	Power Supply:	230V / 50 - 60 Hz / 160VA
Cat. No. 02-1910-00		115V / 50 - 60 Hz / 160VA

TAZ 19.200	Filter:	Filter casing with one package carbon for formalin
Cat. No. 02-1920-00	Power Supply:	230V / 50 - 60 Hz / 160VA
Cat. No. 02-1930-00		115V / 50 - 60 Hz / 160VA

Further technical data consistent with **TAZ 19.000**.

TAZ 19.400	Filter:	Connection to external ventilation system
Cat. No. 02-1940-00	Power Supply:	230V / 50 - 60 Hz / 160VA
Cat. No. 02-1950-00		115V / 50 - 60 Hz / 160VA

Further technical data consistent with **TAZ 19.000**.

Accessories	Purchasing Unit	Category No.
Fume hood, plexiglass	1 pc.	69-3500-00
Universal carbon, for use with TAZ 19.000	Bucket of 5 kg	46-6040-00
Special carbon for formaldehyde, for use with TAZ 19.200	Bucket of 5 kg	46-6041-00

TFB 45



The **TFB 45** is a round water bath, made of aluminum for safe and easy stretching and drying of tissue sections in histological and pathological laboratories. The bath's insides and rim are coated with black synthetic material to avoid corrosion. The rim is also heated and wide enough to store and dry microscope slides.

The **TFB 45** operates with a temperature range of +30 °C to +90 °C. A user-friendly temperature controller allows setting the desired temperature +/- 2 °C.

For further accessories, see **TFB 45**, p. 54.

Technical Data:

Dimensions overall (Ø/H):	300 mm, 90 mm
Dimensions water bath (Ø/H):	210 mm, 55 mm
Dimensions rim (W):	45 mm
Bath volume:	1.5 l
Temperature range:	+30 °C to +90 °C
Weight:	ca. 2 kg
Cat. No. 01-4500-00	Power Supply: 230V / 50 - 60 Hz / 250VA
Cat. No. 01-4510-00	115V / 50 - 60 Hz / 250VA

TFB 55



The round Tissue Floatation Bath **TFB 55** has an extra wide rim for storage and drying of microscope slides. The water bath is perfectly suitable for safe and easy stretching, and drying of sectioned specimens in histological and pathological laboratories.

The **TFB 55** operates with a temperature range of +30 °C to +90 °C. A user-friendly temperature controller allows setting the desired temperature +/- 2 °C.

For further accessories, see **TFB 45**, p. 54.

Technical Data:

Dimensions overall (Ø/H):	340 mm, 90 mm
Dimensions water bath (Ø/H):	210 mm, 55 mm
Dimensions rim (W):	55 mm
Bath volume:	1.5 l
Temperature range:	+30 °C bis +90 °C
Weight:	ca. 2 kg
Cat. No. 01-5500-00	Power Supply: 230V / 50 - 60 Hz / 250VA
Cat. No. 01-5510-00	115V / 50 - 60 Hz / 250VA

TFB 35



The Tissue Floatation Bath **TFB 35** is a rectangular water bath with LED illumination, removable glass tray and compatible lid. It can be used in all fields of biomedical research and routine diagnostics.

To avoid corrosion, the casing is made of high quality stainless steel. The well-spaced and heated working plate is coated with robust black synthetic material. Paraffin sections are in good contrast to this material. The water surface is illuminated with non-reflective LED, enabling applying the tissue sections in the best quality possible.

A temperature sensor plunges into the glass tray of the **TFB 35**, to ensure reliable temperature regulation. To insert or remove the glass tray, the sensor can easily be moved up and to the side.

Technical Data:

TFB 35.000	Dimensions overall (W/D/H):	430 x 300 x 90 mm
	Dimensions glass tray (W/D/H):	270 x 165 x 50 mm
	Working plate (W/D):	370 x 75 mm
	Bath volume:	1.5 l
	Temperature range:	+30 °C to +55 °C
	Weight:	7 kg
Cat. No. 01-3500-02	Power Supply:	230V / 50 - 60 Hz / 250VA
Cat. No. 01-3510-02		115V / 50 - 60 Hz / 250VA
TFB 35.500	Dimensions glass tray (W/D/H):	270 x 165 x 80 mm
	Bath volume:	2.8 l
Cat. No. 01-3550-02	Power Supply:	230V / 50 - 60 Hz / 250VA
Cat. No. 01-3560-02		115V / 50 - 60 Hz / 250VA

Further technical data consistent with **TFB 35.000**.

Accessories	Purchasing Unit	Category No.
Accessory kit for TFB 45 incl. thermometer and holder, lid	1 set	11-4500-00
Accessory kit for TFB 55 incl. thermometer and holder, lid	1 set	11-5500-00
Thermometer for TFB 45 and TFB 55 0 °C - 100 °C	1 pc.	51-4551-00
Thermometer holder for TFB 45	1 pc.	11-4540-00
Thermometer holder for TFB 55	1 pc.	11-4541-11
Lid for TFB 45 and TFB 55 made of aluminum	1 pc.	11-5541-00
Lid for TFB 35.000 made of aluminum	1 pc.	11-4550-01
Lid for TFB 35.500 made of aluminum	1 pc.	11-4550-10
Glass tray for TFB 35.000 , volume 1.5 liters	1 pc.	51-4552-00
Glass tray for TFB 35.500 , volume 2.8 liters	1 pc.	51-4553-00

OTS 40

Picture: OTS 40.2025



The five different models of the Stretching Table **OTS 40** are available for the individual requirements of different laboratories. The different sizes let you find a model that fits into every work space.

The working plate is made of aluminum, coated in synthetic material, and 6 mm thick. This helps to quick heating to the desired working temperature and keeps it stable. On the front of the **OTS 40** is a temperature controller where the temperature can be set between +30 and +99 °C. The current temperature is shown next to it in a digital display during the whole operation.

The **OTS 40** series is well-established in the routine of laboratories. Decisive factors for choosing the **OTS 40** are the high temperature constancy and sturdy casing.

Technical Data:

OTS 40.1520	Dimensions (W/D/H):	150 x 200 x 80 mm
	Temperature range:	+30 °C to +99 °C
	Weight:	1.7 kg
Cat. No. 01-4001-00	Power supply:	230V / 50 - 60 Hz / 120VA
Cat. No. 01-4101-00		115V / 50 - 60 Hz / 120VA
OTS 40.1540	Dimensions (W/D/H):	150 x 400 x 80 mm
	Temperature range:	+30 °C to +99 °C
	Weight:	2.9 kg
Cat. No. 01-4002-00	Power supply:	230V / 50 - 60 Hz / 260VA
Cat. No. 01-4102-00		115V / 50 - 60 Hz / 300VA
OTS 40.2025	Dimensions (W/D/H):	150 x 250 x 80 mm
	Temperature range:	+30 °C to +99 °C
	Weight:	2.4 kg
Cat. No. 01-4003-00	Power supply:	230V / 50 - 60 Hz / 250VA
Cat. No. 01-4103-00		115V / 50 - 60 Hz / 250VA
OTS 40.2530	Dimensions (W/D/H):	250 x 300 x 80 mm
	Temperature range:	+30 °C to +99 °C
	Weight:	3.6 kg
Cat. No. 01-4004-00	Power supply:	230V / 50 - 60 Hz / 350VA
Cat. No. 01-4104-00		115V / 50 - 60 Hz / 350VA
OTS 40.3040	Dimensions (W/D/H):	300 x 400 x 80 mm
	Temperature range:	+30 °C to +99 °C
	Weight:	5.4 kg
Cat. No. 01-4005-00	Power supply:	230V / 50 - 60 Hz / 550VA
Cat. No. 01-4105-00		115V / 50 - 60 Hz / 550VA



The Heated Forceps **eCep** allows easy and safe handling of histological paraffinated tissue sections without contamination by residue from other tissue. The forceps heat only at the tip, eliminating the risk of hot grips.

The complete system consists of a control unit and one heated forceps in a size of choice. Two forceps can be connected to one control unit and stored on top of it when not using. Integrated temperature control ensures the heating of the forceps tips to a temperature of between 65 °C and 75 °C. This temperature range is perfect for working with tissue samples as it prevents damage from overheating.

Technical Data:

eCep 1 mm	Tip diameter:	1 mm
Complete System	Dimensions (W/D/H):	123 x 162 x 57 mm
	Temperature range:	up to +75 °C
	Weight:	1.1 kg
Cat. No. 43-0001-01	Power Supply:	115/230V / 50 - 60 Hz

eCep 2 mm

Complete System	Tip diameter:	2 mm
Cat. No. 43-0002-01	Power Supply:	115/230V / 50 - 60 Hz

Further technical data consistent with **eCep 1 mm**

eCep 4 mm

Complete System	Tip diameter:	4 mm
Cat. No. 43-0004-01	Power Supply:	115/230V / 50 - 60 Hz

Further technical data consistent with **eCep 1 mm**

eCep 0.5 mm

Complete System	Tip diameter:	0.5 mm
Cat. No. 43-0005-01	Power Supply:	115/230V / 50 - 60 Hz

Further technical data consistent with **eCep 1 mm**

Accessories	Purchasing Unit	Category No.
Forceps, tip diameter 1 mm	1 pc.	43-0011-00
Forceps, tip diameter 2 mm	1 pc.	43-0012-00
Forceps, tip diameter 4 mm	1 pc.	43-0014-00
Forceps, tip diameter 0.5 mm	1 pc.	43-0015-00
Control Unit	1 pc.	43-0021-00
Complete System with control unit and forceps, tip diameter 1 mm	1 pc.	43-0001-01
Complete System with control unit and forceps, tip diameter 2 mm	1 pc.	43-0002-01
Complete System with control unit and forceps, tip diameter 4 mm	1 pc.	43-0004-01
Complete System with control unit and forceps, tip diameter 0.5 mm	1 pc.	43-0005-01

L15

The **L15** paraffin filtering machine is suitable for melting and filtering paraffin in large amounts. With the space-saving device, paraffin is always available for dispensing for the various processes in the laboratory. The dispenser on the front is very easy to use, and prevents liquid paraffin from dripping out. The high position allows positioning big containers underneath to fill them easily.

The **L15** has a total capacity of around 15 liters. A spacious opening on top of the machine allows quick and easy refilling at any time. To ensure the purity of paraffin, impurities are filtered with a special cartridge. Depending on the way and amount of use, the cartridge lasts up to six months.

The temperature can be continuously adjusted to a maximum value of 90 °C via a soft key control panel with digital display. All of the surfaces of the **L15** are robust and resistant to all common solvents in the laboratory. When used consequently, paraffin savings of up to 50% can be expected.

Technical Data:

Filter lifetime:	3 to 6 months, depending on frequency of use
Capacity:	up to 15 liters
Dimensions (L/T/H):	390 x 590 x 550 mm
Weight:	19 kg
Temperature range:	adjustable +20 °C to +90 °C
Power supply:	230V / 50 - 60 Hz / 650VA
	115V / 50 - 60 Hz / 650VA

Cat. No. 02-1800-00

Cat. No. 02-1810-00

Accessories	Purchasing Unit	Category No.
Special Filter Cartridge	1 pc.	46-1801-00

EDS 20

With the handy, electric engraving pen **EDS 20**, glass, metal or other material used in industry, science and technique, can be engraved, marked or otherwise inscribed.

The precise instrument comes with an aluminum casing and a strong motor while maintaining a low weight of only 80 g. It automatically activates when it is picked up, and deactivates when put down.

For different applications, two different tip types are available

Technical Data:

Cat. No. 01-2000-00	Casing:	anodized aluminum
	Drive shaft:	stainless steel with special ball bearing
	Dimensions (L/Ø):	150 mm, 20 mm
	Weight:	80 g
	Power supply:	230V / 50 - 60 Hz / 65VA

Accessories	Purchasing Unit	Category No.
Glass Tip, Ø 1.5 mm	Pack of 5 pcs.	46-4010-00
Metal Tip, Ø 2.5 mm	Pack of 5 pcs.	46-4020-00
Anti-glide pad, black rubber, dimensions (W/D/H): 230 x 160 x 5 mm	1 pc.	46-4040-00

§ 1 Validity of terms and conditions

Only our terms and conditions apply. Buyer's acknowledgements referring to his own terms and conditions are hereby rejected. Variations of this terms and conditions or acceptance of contrary terms and conditions require our explicit acknowledgement in written form.

In case of invalidity of single paragraphs, all further parts of the contract are binding, unless the obligation to the contract would mean an unacceptable disadvantage for one contracting party.

When using INCOTERMS, the version of 2020 applies.

§ 2 Conclusion of contract

All our offers shall be understood as invitation for contract formation without binding. A purchase agreement is only formed when the purchasing partner receives an order acknowledgement in written form or when deliverance according to these terms and conditions takes place.

Oral agreements require our acknowledgement in written form to become obligatory.

After conclusion of contract, the buyer has to provide all information concerning his order that is necessary for us to make a reliable schedule. Insofar, the buyer is obligated to render previous services.

Drawings, samples, drafts, design drawings and such remain our property and are not allowed to be used for different intentions or made open to business competitors without particular permission.

§ 3 Prices

Unless nothing to the contrary is agreed in writing, all prices are valid ex works excluding packaging.

We reserve the right to raise the prices due to changes in wages, material costs or tax rises, if the agreed or actual time of delivery is more than four months (one month on trade businesses). If that raise is more than 10%, the purchasing partner is allowed to resign from the contract if the goods have not been accepted yet.

For orders from Germany: Orders with a value of less than 250.00 EUR net will be charged an additional general minimum quantity surcharge of 9.50 EUR. Deliveries with a total weight of below 40.0 kg are free of charge within Germany. Deliveries with higher weight will be charged according to expenditure.

For order from abroad: The freight and accompanying charges at the time of delivery are valid. The respective costs are calculated individually according to expenditure.

All prices are valid plus VAT. With VAT ID of buyer within EU, no VAT needs to be invoiced.

§ 4 Delivery and transfer of risks

Delivery times only apply as fixed dates if they were particularly confirmed in written form. Our obligation to supply is ceased until every prior obligation of the buyer is fulfilled. Same applies to approval of drawings.

The buyer may claim his rights in case of performance delay only if he grants us an appropriate grace period, which has to be at least 30 days, unless it is dispensable according to the law.

We are eligible to partial delivery if this does not affect the buyer inappropriately. The risk of loss, damage and costs is transferred to the buyer by the time the seller places them packaged and ready for collection at the warehouse of MEDITE Medical GmbH, Burgdorf, Wollenweberstrasse 12, Germany. According to our general terms of delivery Ex Works, the delivery resp. the performance is fulfilled with the allocation for collection. Henceforth, the buyer has the right of disposition, power of disposition, and bears the risk.

As a basic principle, goods of an average kind and quality are owed unless otherwise particularly agreed in written form.

§ 5 Payment

If not otherwise determined, invoices have to be paid within 30 days net from date of invoice.

If we have reasonable doubt on a buyer's financial solvency, his creditability, or the country's creditability, especially if he ceased his payment, we are empowered to register collateral or demand prepayment for pending deliveries without prejudice to other rights.

On first time orders, we are empowered to fulfil the order only against prepayment or cash on delivery.

We explicitly reserve the right not to accept cheques and bills of exchange. The acceptance always happens on account of payment. Discount and exchanging charges always go at the buyer's expense and are due on receipt.

We are entitled to claim payment initially for prior liabilities, despite contrary terms of the buyer. The buyer will be informed. If costs and interests already accrued, we are entitled to claim the payment prior to costs, then to interests, and last to the buyer's principal claim.

The calculation of interest is based on § 288 BGB (German civil code), or in case of bilateral transaction, before the default occurs, according §§ 352, 353 HGB (code of commercial law). Given that the debtor is in default, we are entitled to charge a fine in the amount of 5.00 Euros for every further reminder notice.

Offset rights are only due to the buyer, if his counterclaims were legally noticed, uncontended or acknowledged from us in written form.

§ 6 Quality, warranty of defects

To define the quality of a good, only the acceptance of order is representative; if it is missing, the quality is defined by quotation text.

If further to the offer clarifications are made by the buyer, they only become a binding agreement to contractual quality when acknowledged by us in written form.

Drawings only define the contractual quality, if they are approved by the buyer with his signing on the front side.

Contractually agreed are also variations of the described quality in equipment, shape and colour, as they may be stated in prospects or similar presentations or in offers where the quality is described. Presentation in prospects is always only approximately and under subject of alterations. The capability of goods for the intended use is not subject of the description of their quality. That is only the case if the intended use is described in the instruction manual or otherwise explicitly confirmed.

An attrition due to the nature of a good's quality and its component parts is not agreed to be a lack. This applies especially for cable links, gripping elements, vacuum exhausters, microscope slides, plastic jars (embrittlement, deformation) and for batteries for backup power supply. For further details, refer to the specific warrant of the device in question.

Any warranty expires if the good is changed further than an installation according to the state the art and installation information. Changes in construction and design are explicitly reserved. The customer is obliged to check the specifications stated in the order acknowledgement concerning their conclusiveness with reference to the intended use.

Obvious defects have to be indicated immediately in written form, at the latest ten days after receipt. If the defect emerges later on, the buyer has to indicate it immediately after its recovery in written form to the salesperson. On bilateral transactions, §§ 377 ff. HGB (code of commercial law) applies.

If the good is already defect at the time of transfer of risks, we may within ten days either repair the good or deliver in addition after regaining the defect goods, due to the obligation of supplementary performance. The decision which action to take is on us.

Principally, the claim of additional delivery is considered to entail disproportionately great costs if the model has been changed by the supplier in the time between selling and emerging of the defect.

Warranty claims expire within one year after delivery. If the buyer claims warranty with no sufficient qualification, may it be there is no defect or the defect does not qualify to claim warranty, the buyer has to repay all of our incurred expenses.

For warranty claims, we reserve the right to request proof of proper handling and compliance with the recommended maintenance cycles.

§ 7 Reservation of proprietary rights

We reserve the right on all properties until all payment according to the contract is received. The reservation of proprietary rights on bilateral transactions applies until every claim on the customer is fulfilled that may accrue to us now or in the future. We are entitled to regain the goods immediately in case of repudiatory conduct, especially in case of default.

The buyer is entitled to sell the goods in proper business transactions, as long as he is not in default. The buyer resigns to us preventively in advance all the claims resulting from reselling the goods that are subject to retention of title resulting, or another legal basis, in their entirety.

The buyer is authorized to collect the assigned claims under his own name for our account until cancelled or payment is ceased.

Goods that are subject to retention of title and the claims that take their position are not to be pawned or assigned for backup. On access of third parties, especially bailiffs, on reserved goods or assigned claims the buyer is obliged to point out our rights and inform us immediately via registered letter about the access.

If the worth of the collateral exceeds the claims more than 20%, we will release collateral at own option upon request.

§ 8 Liability

Liability for simple negligence is ruled out, if not required by law. Any further liability for purpose and gross negligence remains. The liability on default is limited on 0.5% of order value per week; on the whole the liability is limited on a maximum of 10% of the order value. Furthermore, claims for compensation are limited on the compensation of attested additional costs (covering purchase on basis of three offers by comparison).

§ 9 Protection of models, contractual penalty for retailer

In case of bilateral transaction the buyer is obliged to not recreate the products or have them recreated and sell them. In case of violation we have the right to claim contractual penalty. The amount of the claim for every recreated piece is 100% of the price of the respective article. Decisive is the valid price list at the time of violation. Our right for further damage claims stays unaffected hereof.

§ 10 Applicable law, Jurisdiction

Place of fulfilment for payment of the purchase price as well as other deliverables of the buyer is always our registered office. Place of fulfilment for our deliverables is also our registered office.

Exclusive place of jurisdiction for all disputes arising out of or in connection with this contract shall be the city of MEDITE Medical GmbH registered office relevant at the time.

This business conditions and all legal relationships shall be governed by the laws of the Federal Republic of Germany.

Effective 04/2020

MEDITE

MEDITE Medical GmbH

Wollenweberstr. 12

31303 Burgdorf

Germany

Phone +49 (0) 51 36/88 84-0

Fax +49 (0) 51 36/88 84-55

info@medite.de • www.medite.de

Your Sales Contact



2/36 Hensbrook Loop

Forrestdale WA 6112

P. 1300 778 068

e. sales@hurstscientific.com.au

www.hurstscientific.com.au