

| Pocket Testers



Standard battery: 4 × 1.5V AAA

Data locking function

Intelligent design, with self-diagnostic functions

Locking ring
Designed with replaceable probes,
Combines pH/Cond/TDS/RES/Sal.
altogether



DEC1/DEC1+

Backlight display color:
White color: measurement mode
Green color: calibration mode
Red color: alarm mode activated

Sample ID classification and
measurement information share

Power key

- When turned off, short press to turn on the tester; long press to enter parameter setting.
- When turned on, long press to turn off the tester, short press to turn on/off backlight or exit set-up mode.

MODE key

- Long press to turn on/off blue tooth connection
- short press to switch parameter

CAL/ENT key

- Long press to enter calibration mode.
- Short press to manually lock/unlock reading.

DPH1



DPH1+



DORP1



DORP1+



DEC1



DEC1+



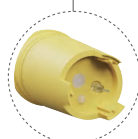
DPC1



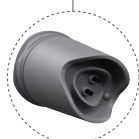
DPC1+



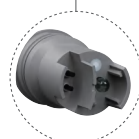
Default probe: DPH1-S



Default probe: DORP1-S



Default probe: DEC1-S



Default probe: DPC1-S



Optional probe: DORP1-S



Optional probe: DPH1-S Optional probe: DORP1-S Optional probe: DEC1-S

Features

- Replaceable combined probe design, meeting different applications
- Multi-color backlight display, easy to read data in different modes
- Data reading indicator and automatic data locking when the reading is stable
- Low voltage indication ensures timely battery replacement
- Buffers solutions: CH, USA, NIST standards are selectable
- Auto shut-off time, customized backlight display time
- Supplied with standard solution, sample vials and lanyard for convenient field test
- Dual-control mode with mobile APP connection to achieve powerful data storage
- The mobile APP provides 4 types of measurement display for different situations, including Graph, Graph mode, Table mode, Dial mode, and General mode
- Protection class: IP67

Specifications

Model		DPH1	DORP1	DEC1	DPC1	
Parameter	pH/mV.°C	✓	-	-	✓	
	mV(ORP).°C	✓	✓	-	✓	
	Cond/TDS/Sal./Res.°C	-	-	✓	✓	
pH	Measurement range	(-2.00-16.00) pH	✓	-	-	✓
	Resolution	0.1/0.01	✓	-	-	✓
	Accuracy	±0.01pH±1digit	✓	-	-	✓
	Calibration points	1-, 2-, or 3-point	✓	-	-	✓
	ATC range	0~50°C (32-122°F)	✓	-	-	✓
ORP	Measurement range	(-1000.0+1000.0) mV	✓	✓	-	✓
	Resolution	0.1/1	✓	✓	-	✓
	Accuracy	±0.1%F.S±1digit	✓	✓	-	✓
Conductivity	Measurement range	0-19.99mS/cm, Auto-ranging: 0-19.99µS/cm; 20.0-199.9µS/cm; 200-1999µS/cm; 2.00-19.99mS/cm TDS: 0.0mg/L-10.0g/L (TDS factor adjustable) Resistivity: 50Ω · cm-20MΩ · cm Salinity: 0-10ppt	-	✓	✓	✓
	Resolution	0.01/0.1/1	-	✓	✓	✓
	Accuracy	±1.0%±1digit	-	✓	✓	✓
Temperature	Measurement range	(0.0-50.0) °C/(32.0-122.0)°F	✓	✓	✓	✓
	Accuracy	±0.2°C	✓	✓	✓	✓
Test Kit	Meter	✓	✓	✓	✓	
	Probe(pre-installed)	DPH1-S	DORP1-S	DEC1-S	DPC1-S	
	pH buffer solution: pH4.00/7.00/10.01, 30mL, one for each	✓	-	-	-	
	3.0 mol KCl pH/ORP soaking solution, 10mL, 1 bottle	✓	✓	-	✓	
	Sample Vials: 30mL	3	1	2	4	
	Standard ORP solution 222 mV, 30mL	-	✓	-	-	
	Standard Cond solution 1413µS/12.88mS/cm 30mL, one for each	-	-	✓	✓	
	pH buffer solution: pH4.00/7.00, 30mL, one for each	-	-	-	✓	
	4×1.5V AAA alkaline batteries (pre-installed)	✓	✓	✓	✓	
	Lanyard	✓	✓	✓	✓	
	Hard carrying case (L/W/H: 28.0×23.0×8.2cm)	✓	✓	✓	✓	
Operation manual	✓	✓	✓	✓		

Specifications: Bluetooth Series

Model		DPH1+	DORP1+	DEC1+	DPC1+	
Parameter	pH/mV.°C	✓	-	-	✓	
	mV(ORP).°C	✓	✓	-	✓	
	Cond/TDS/Sal./Res.°C	-	-	✓	✓	
pH	Measurement range	(-2.00-16.00) pH	✓	-	-	✓
	Resolution	0.1/0.01	✓	-	-	✓
	Accuracy	±0.01pH±1digit	✓	-	-	✓
	Calibration points	1-, 2-, or 3-point	✓	-	-	✓
	ATC range	0-50°C (32-122°F)	✓	-	-	✓
ORP	Measurement range	(-1000.0 -+1000.0) mV	✓	✓	-	✓
	Resolution	0.1/1	✓	✓	-	✓
	Accuracy	±0.1%F.S±1digit	✓	✓	-	✓
Conductivity	Measurement range	0-19.99mS/cm, Auto-ranging: 0-19.99µS/cm; 20.0-199.9µS/cm; 200-1999µS/cm; 2.00-19.99mS/cm TDS: 0.0mg/L-10.0g/L (TDS factor adjustable) Resistivity: 50Ω · cm-20MΩ · cm Salinity: 0-10ppt	-	✓	✓	✓
	Resolution	0.01/0.1/1	-	✓	✓	✓
	Accuracy	±1.0%±1 digit	-	✓	✓	✓
Temperature	Measurement range	(0.0-50.0) °C/(32.0-122.0)°F	✓	✓	✓	✓
	Accuracy	±0.2°C	✓	✓	✓	✓
APP	Calibration reminder	✓	✓	✓	✓	
	Sample ID Classification	✓	✓	✓	✓	
	Timing datalogging	✓	✓	✓	✓	
	Operation guider	✓	✓	✓	✓	
	Various display modes	✓	✓	✓	✓	
Test Kit	Meter	✓	✓	✓	✓	
	Probe(pre-installed)	DPH1-S	DORP1-S	DEC1-S	DPC1-S	
	pH buffer solution: pH4.00/7.00/10.01, 30mL, one for each	✓	-	-	-	
	3.0 mol KCl pH/ORP soaking solution, 10mL, 1 bottle	✓	✓	-	✓	
	Sample Vials: 30mL	3	1	2	4	
	Standard ORP solution 222 mV, 30mL	-	✓	-	-	
	Standard Cond solution 1413µS/12.88mS/cm 30mL, one for each	-	-	✓	✓	
	pH buffer solution: pH4.00/7.00, 30mL, one for each	-	-	-	✓	
	4 × 1.5V AAA alkaline batteries (pre-installed)	✓	✓	✓	✓	
	Lanyard	✓	✓	✓	✓	
	Hard carrying case (L/W/H: 28.0×23.0×8.2cm)	✓	✓	✓	✓	
Operation manual	✓	✓	✓	✓		